

# Everything Equine

**Free**  
May 2007  
29th Edition

Win a Horseback  
Safari for two.  
See page 20.

[www.everything-equine.com](http://www.everything-equine.com)

**When only the best will do.**



Wood Barns



Block Barns

Metal Barns

Riding Arenas

Living Quarters

Fences



Garages

Equipment Buildings

Shops

Custom Homes

Commercial Buildings

Work Warranted!



**D.T. Ovitt**  
**Contracting**

[www.dtovitt.com](http://www.dtovitt.com)

Mobile 386-937-1902

Office 386-532-9200

Fax 386-532-9267



**Financing**  
now available

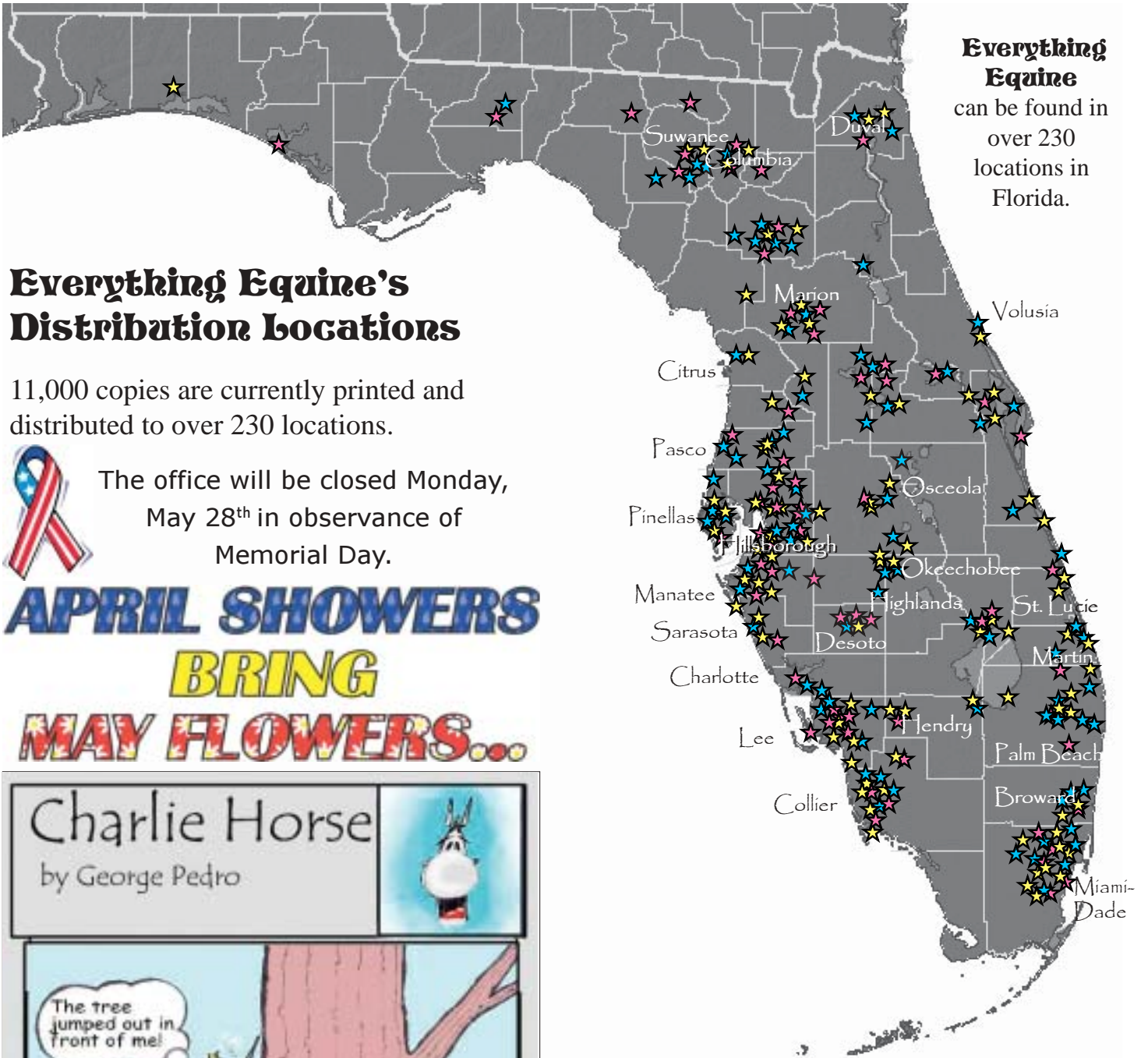


Serving Florida  
since 1990!



2490 Worth Lane  
Deltona, FL 32738  
Lic# FL3120504





## Everything Equine's Distribution Locations

11,000 copies are currently printed and distributed to over 230 locations.



The office will be closed Monday,  
May 28<sup>th</sup> in observance of  
Memorial Day.

**APRIL SHOWERS**  
**BRING**  
**MAY FLOWERS...**



See more of Charlie Horse at [www.ssfer.org](http://www.ssfer.org)

Call Everything Equine  
1-(877)-214-8581 toll free  
OR  
941-375-2029  
239-403-3784

fax number~941-870-2510~fax number

# Everything Equine

460 6th St NE  
Naples, FL 34120

Melody Halperin  
239-370-5945cell

941-375-2029 239-403-3784 Office Phones  
941-870-2510 Fax

Everything Equine does not require your local feed, tack, or convenience store to advertise to be a distributor. If Everything Equine is not at your store of choice, please contact the office and it will be added to the mailing list.

Every attempt has been made to ensure that the content is free from errors. If you feel an error has been made, please bring it to our attention.

Everything Equine does not require references or perform background checks on the advertisers. Therefore Everything Equine can not endorse and is not responsible for the validity or quality of products and services advertised or items placed for sale.

Caveat emptor and likewise, caveat venditor.

Comments and/or suggestions are welcome!

Subscriptions are available.

## Browse by County:

Central FL pg 13  
Charlotte pg 8  
Collier pgs 4-7  
Columbia pg 8  
Desoto pg 8  
Hamilton pg 8  
Hardee Back Cover  
Hendry pg 17  
Lee pgs 10-13  
Marion pgs 8  
Osceola pg 20  
Statewide pgs 9  
Suwannee pg 9  
Volusia Front Cover

## Special Features:

Club Scene pg 16-17  
Enter to WIN pgs 20  
Horse Stress pgs 14-15  
Horse Tales pgs 18-19  
Just For Fun pg 9  
Q&A pg 8

## At Your Fingertips:

Business Rates pg 22  
Calendar pg 21  
Classified Rates pg 22  
Map of Counties pg 2

## Business index

### Business Page

|   |    |
|---|----|
| Bar Crescent S Ranch                          | 24 |
| Bits and Pieces                               | 10 |
| Brooke's Legacy Animal Rescue                 | 6  |
| Collier County Animal League                  | 7  |
| Corner Creek Ranch                            | 12 |
| D.T Ovitt Contracting                         | 1  |
| Dream Catcher Stables                         | 10 |
| Equestrian Corner, The                        | 5  |
| Estates Feed & Supply                         | 7  |
| Everglades Ranch                              | 4  |
| Featherwind Ranch                             | 12 |
| Florida Home Realty -Shannon Gilmore          | 7  |
| Forever Florida, Eco-Safaris                  | 20 |
| Golden Gate Nursery                           | 4  |
| Grandview Hay & Straw                         | 9  |
| Greenbriar Equestrian Centre                  | 17 |
| Hardesty Hay Farms                            | 13 |
| Homestead Everglades Posse                    | 16 |
| Horse On The Run, Equine Transport            | 7  |
| Kowiachobee Animal Preserve                   | 7  |
| MD's Choice Total Mobility EQ                 | 23 |
| MYQ Ranch, Hay                                | 6  |
| Punta Gorda Horseman's Association            | 16 |
| Round the Bend Animal Care                    | 5  |
| Rusty Nail Farrier Service                    | 7  |
| Sellstate Associates Realty - Wendell Stuckey | 12 |
| South Eastern Distance Riders Assn.           | 17 |
| Southcoast Performance Horse Club             | 16 |
| Sweet Cypress Ranch, Hay for Sale, Breeding   | 11 |
| Tikigator Farm                                | 6  |
| Triple F Trailers                             | 18 |
| Tropic Trucks                                 | 10 |
| Watson Realty - Central FL Property           | 13 |



Collier

Collier

Collier

Collier

Collier

Collier

Collier

## For Sale:

2.7 acres with  
Nice 3 bedroom, 2 bath house  
off Wilson Blvd.

(additional 5.6 acres available on canal)

All stainless steel appliances, water system and  
central heat and air are under 5 years old.

Big screen porch on the back.

Barn, with 4 stalls, tack and feed room, separate well  
for water. All stalls have mats and fans. 60 foot panel  
round pen. 30x40 block garage with roll down doors  
front and back, road access from 18th Ave as well as  
Jung Blvd accessible.

Completely fenced and cross fenced. Many extras,  
plantation shutters on all windows, huge pantry off  
kitchen, extra office (20 x 15) off master bedroom,  
fireplace, tile and wood floors throughout, circular  
drive with automatic gates front and rear of property.

**MUST SEE!** Offered at \$475,000.

Please call Becky at 239-450-6050 to see.

# Everglades Ranch

Now Enrolling  
for Summer  
Camp!

Horse Boarding Facility

## STALLS NOW AVAILABLE!

Phone: 239-455-8552

2740 Newman Dr.

Fax: 239-455-8835

Naples, FL 34114

[Evergladesranch@aol.com](mailto:Evergladesranch@aol.com)

\$15 for day use of facility

\$25 for an overnight stall (your feed)

## Cabins & Camping now available!

Boarding \$225(shared) up to \$500(full)

2 round pens, one lighted

2 lighted arenas, one is show size

Lease horses by the month Buy & sell horses

Resale store on site

Adjacent to the Belle Meade Horse Trails  
in the Picayune State Forest!

**Livestock & Pet Supplies**

- Nutrena Feed
- Seminole Feed
- Central States Feed
- Vaccines
- Electric Fencing
- Small Pet & Bird Supplies
- Hay
- Haytolls
- Western & English Tack
- Log & Sm Hay Cubes
- Pet Food and Supplies
- Pest/Fly Control
- Fencing & Gates
- Feed & Water Troughs
- Mats & Shavings
- Show Needs
- Small Supplies

**Garden & Landscape Needs**

- Landscape & Interior Plants
- Soil & Mulch
- Pottery & Ornamentals
- Tropical Fruit Trees
- Natural Stone
- Garden Tools
- Plumbing Supplies
- Garden Supplies
- Herbicides
- Insecticides
- Water Softening Salts
- Fertilizer
- Hardware
- Seeds

# Welcome

to our new store!





**GOLDEN  
gate  
NURSERY**

*a living and growing store*

**14765 Collier Blvd.  
Naples, FL 34119**

(CR 951) Located between  
Vanderbilt Beach and Immokalee Roads

**Phone  
239-455-7233**

**Fax  
239-455-8866**

**Open 7 days a week!**

Monday - Friday 7am to 6pm  
Saturday 7am to 5pm  
Sunday 8am to 2pm

Delivery available





8 year old  
Pinto  
gelding,  
needs  
intermediate  
rider, 15hh,  
cow bred,  
will be a  
wonderful  
family  
horse.  
\$3,000 obo  
239-404-  
3376

### **Diana 239-354-1686**

20 years experience with horses  
references available



Are you  
nervous  
about  
leaving  
your  
animal  
family at  
home  
while you  
vacation?

I understand first hand and want to  
ease your worries.

Round the Bend Animal Care,  
serving the Golden Gate Estates Area



Cute  
Chespear  
AQHA  
Sorrel Stud  
Colt. Foaled  
3/27/05.  
Sire: Shake  
Your Cool  
Thing. Dam:  
JD Pocket  
Change.

Current on shots & Coggins. Has been worked in  
round pen. \$3,500. 239-280-6035

Beach Boy: 2002 APHA  
Palomino 14.0 hh large  
pony, childrens hunter  
extreme, dead quiet,  
very safe, lead  
changes, showing 2'  
courses, winning,  
ready for A Rated.  
\$15k or half-lease  
239-352-2642 or e-mail  
Tikigator@cs.com





# The Equestrian Corner



*Experience today's equestrian lifestyle where style meets performance.*

*Located at*  
Bougainvillea Center  
7740 Preserve Lane, #3  
Naples, FL 34119  
Across from the Gulf Coast High  
School on Immokalee Road.  
From I-75 (exit 111), head  
East 2 miles on Immokalee Road.  
Make a left on Preserve Lane.

*Regular store hours:*  
Tuesday - Friday 10:00am - 6:00pm  
Saturday 10:00am - 4:00pm  
Closed Sunday & Monday

**239-513-0388**

## Summer Hours

Tuesday - Friday 10:00am - 5:00pm  
Saturday 10:00am - 3:00pm  
Closed Sunday & Monday  
Effective June 2<sup>nd</sup>.

Every purchase made at  
The Equestrian Corner in May  
enters you to win a \$100 gift certificate.  
Drawing June 2<sup>nd</sup>.



Collier

Collier

Collier

Collier

Collier

Collier

Collier



Collier



4 yr old sorrel mare. Loads, clips, ties, good w/ other horses. Has been started on barrels. Sire's side - Go Man Go, Do Dick Go. Dam's side: Prissy Gold, Digger, Speed Syndrome. \$3000 239-353-9224



2 1/2 years old gelding, registered AQHA, Hancock bred on both sides. Not broken \$1,200 239-353-9224

Western Endurance Saddle in quality natural leather. 15", centered, black, padded seat. Custom made by David Brooks. 3" bells. Excellent condition!

Good for Arabian type horse. \$499.00 239-514-4963



Collier

Collier

## MYQ RANCH HAY

ALFALFA, TIMOTHY, & T & A  
DELIVERY AVAILABLE  
239-352-1523 \* 239-784-3023 \* 305-345-8210  
MYQRANCH@AOL.COM

Collier

## TIKIGATOR FARM

Private facility now offering boarding.

Full board facility, feedings 3X day,  
large hunter/jumper arena, new barn,  
plenty of turnout, 24/7 turnout option available.

Horse friendly facility with quality care for your horse.

**239-352-2642 or e-mail Tikigator@cs.com**

Collier

Collier



Ready for your horses! Completely updated 3/2 with den on 2.25 fenced acres. 2 stall barn w/ electric and 3 separate pastures. Owner/agent will consider owner financing, lease option or rental. 541 11<sup>th</sup> St SW. **\$520,000** 239-216-1808

Did you know that all issues, past  
and present, of Everything Equine  
can be found at  
**www.everything-equine.com**

(239) 434-7480

(239) 434-7480

Apply to adopt  
online!

*Brooke's Legacy*  
**Animal Rescue, Inc.**

A lot more pets  
on our web site!

All our pets are spayed/neutered & Up to date on vaccinations



**CHARLIE**  
Sex: Male  
Age: 3 years  
Breed: Lab mix  
Precious & sweet.  
Darling little boy  
that has a lot of love.

**BONNIE**  
Sex: Female  
Age: 4 & 1/2 years  
Breed: Min Pin  
Whimsical & adores  
kids. Sweet and  
out-going!



**MADELINE**  
Sex: Female  
Age: 1 year  
Breed: Shepherd mix  
Precious & lovable.  
Dotes on kids, bright  
sweet personality.

**SIERRA**  
Sex: Female  
Age: 1 year  
Breed: Catahoula mix  
A very happy girl,  
good-natured and  
very sweet.



**ANGIE**  
Sex: Female  
Age: 1 & 1/2 years  
Breed: Papillon mix  
Out-going and sweet.  
Loves everyone and  
is house-trained.

**TAZ**  
Sex: Male  
Age: 8 months  
Breed: Bull Terrier mix  
Fun loving & sweet!  
Loves to play, very  
good with everyone!



**BOBETTE**  
Sex: Female  
Age: 2 years  
Breed: Manx  
Super sweet!  
Loves kids, Loves  
to play!

**DIXIE**  
Sex: Female  
Age: 11 months  
Breed: Dachshund mix  
A pure delight! Likes  
kids & other dogs.



Adopt Foster Volunteer Donate  
**DOGS & PUPPIES CATS & KITTENS**  
**www.brookeslegacyanimalrescue.com**  
UNTIL THERE ARE NONE...ADOPT ONE!



**ESTATES FEED & SUPPLY  
GENERAL STORE**  
Feed Hay Western Wear Tack Supplies

**Saddle-Up Sunday Sale**  
Sunday, May 27<sup>th</sup> 2007 11am to 4pm  
All Leather, Western Saddles Starting at \$250

May 27<sup>th</sup>, leather craftsman, Charlie Whitehawk of Thunderbird Leather, will be on site for custom tooling of belts, crosses, purses, arm bands and more...

**Asetta Cordura,  
Double T,  
pony, and mini saddles too!  
Sizes range from 14\"**

**Double seat saddles!**

**Over 25 saddles  
and saddle sets  
in stock!**

**Congratulations  
to  
Jessica Dupree  
who won this  
saddle set at our  
grand opening  
celebration!**

Open 7 Days a Week  
Mon - Sat 9am to 6pm  
Sunday 11am - 4pm

239-403-7669  
12445 Collier Blvd.  
Naples, FL 34116

Signature Saddlery, Estates Feed and Supply, and more! Call a delivery service for more!

Ron Raux

**Horse On The Run Inc.**

Horse Transportation  
Shows  
Local & State  
Emergencies

Email ddiveride7@aol.com Phone (239) 777-9397  
Licensed & Insured (239) 777-9793

**TACK / APPAREL FOR SALE:**

3 older western saddles need cleaning, \$125each or all for \$300

New John Whitaker by CO helmet 6 3/4 (55), Misc Sheets, blankets, Tacky Tack pads (english), size 9 field boots w/zipper, size 9 dress boots w/zipper.

E-mail for complete list, must sell all offers considered!!  
TikiGator@cs.com or call 239-352-2642

**Kowiachobee Animal Preserve**  
A Non Profit Educational Organization

Educational Presentations, Lectures,  
and Private Group Functions Available  
On and Off Site

Phone: (239) 352-5387  
Cell: (239) 253-7826  
Fax: (239) 352-3510  
www.KAP-NAPLES.com

2861 4th Avenue SE  
Naples, FL 34117

**Collier County  
Animal League, Inc.**

**Collier County Animal League**  
6017 Pine Ridge Rd., #138  
Naples, FL 34119-3956  
Phone: (239) 450-6301  
Fax: (707) 598-7680

Please come visit  
our cats and dogs for  
adoption at Petsmart on  
Airport Rd and Pine Ridge  
in Naples on Saturdays  
from 10:00 until 3:00.

This is your lucky Chance to adopt a wonderful dog!  
Chance is a very sweet, very shy one-year-old shepherd mix. Chance is a small girl - only 37 lbs!! She is very happy but needs a safe and secure environment where she can overcome her shyness. Can you provide her with the safe home she so desperately needs? Adoption fee is required.

For more info call 239-450-6301 or go to  
**[www.ccalrescue.org](http://www.ccalrescue.org)**

**RUSTY NAIL**  
Farrier Service

Where the  
only thing  
rusty is the  
competition!

Josh Alzamora  
BWFA  
Certified Farrier

131 1st ST S.W.  
Naples, FL 34117  
cell: 239-494-7465

Collier

Collier

Collier

Collier

Collier

Collier



|          |  |   |           |   |
|----------|--|---|-----------|---|
| Desoto   |   |  | Charlotte | <p>We rent horse trailers!</p> <p>Have 2-horse bumperpulls 4-sale, with new floors and new paint! \$2,000. We'll match trailer color to your truck color.</p> <p>Trailer repairs also done.</p> <p>For Sale: Lots of ponies - Hunter/Jumper prospects. Minis. Trail ponies. All sizes. \$750 up to \$2000 Gaited mare, \$2,500</p> <p>941-637-5996 home 941-380-9868 cell</p> |
| Desoto   | <p>2004 POA Gelding. Outstanding Hunter Prospect. Going great on the flat. Easy to catch, bathe, clip, saddle, bridle and trailer. NO vices. Very quiet and gentle. \$3200 863-990-6893</p>  |  |           |   |
| Hamilton | <p><b>For Sale By Owner:</b></p> <p>30 acre North Florida farm with 3/2 modular home and 3 bay workshop. Cross fenced with water to pastures. Located just 5 miles from 4 State Parks for swimming, fishing, boating and trail riding. Convenient to Valdosta shopping, Wild Adventures and more. Reduced to \$260,000 for fast sale. 386-938-5072</p> |  |           |   |
| Hamilton |  |  |           |  <p>Things to remember:<br/>Everything Equine's<br/>ad deadline is the<br/>21<sup>st</sup> of May.</p>   |

|        |   |  |
|--------|---|--|
| Marion | <p><i>Sterling Silver Farm</i><br/><b>EQUINE RESCUE</b><br/>We Need Your Help to Save Lives</p>  | <p><b>When and how should a colt be gelded?</b></p>   |
| Marion |   | <p><b>Q:</b> I am interested in finding out the best age to geld a colt. Also, what is the least traumatic method, from both a physiological and psychological standpoint? I understand that the surgery can be performed with either a general or local anesthetic. What do you recommend?</p>  |
| Marion |   | <p><b>A:</b> In terms of when to castrate, the earlier it is done, the better. Theoretically, as soon as two testicles are present, the colt can be castrated. The earlier it's done the less traumatic it is for the colt. Once stallion-like behavior begins, it may not change with castration. Certainly, the longer the horse demonstrates stallion-like behavior before castration the less likely it is to change afterwards. Field anesthesia, when done correctly, is very safe. Therefore, general anesthesia is the best way to go.</p> |
| Marion | <p>Hay, Feed &amp; Cash Needed!<br/><i>Silver Springs, Florida</i><br/>(352) 625-1946<br/>www.ssfer.org</p>   | <p>Answer provided by Dr. Dan Keenan, DVM, Keenan McAlister Equine.<br/><a href="http://www.esc.rutgers.edu/ask_expert/Equine_Management.htm#wtg">http://www.esc.rutgers.edu/ask_expert/Equine_Management.htm#wtg</a></p>  |



## HORSE CLUB CO-OP!

The Horse Club Co-Op is where any horse club may print their showbill or other club related information. The pages are discounted and will be divided onto 1/4 sections, so the different clubs can share in the cost of the page. This is open to any club regardless if they host a show. See page 16 for club information.

Please call me at 239-403-3784 for more details.

For \$25, you can reach over 11,000 possible members in Everything Equine's Co-op!

## Grandview Hay & Straw

From our horse farm to yours.  
SERVING THE SOUTH FOR 35 YEARS

Great Mid-western hay:

Alfalfa

Alfalfa-Orchard

T & A

Small squares & big squares available

Best price delivered!

Call Shannon Cobbs

260-433-5318

Call Everything Equine toll free at  
1-(877)-214-8581.

Statewide Delivery

## Lost? Stolen?

Everything Equine would like to help.  
Please send a photo and information  
about the lost or stolen animal.  
It will be included free of charge on a  
space permitting basis.

5 acres for  
sale in the  
heart of  
Suwannee  
County, 13  
miles  
south of  
Live Oak,  
improved  
pasture,  
high & dry,  
Bermuda  
grass,  
fenced on 2 sides. \$65,000! 386-776-2145



Suwannee Suwannee

Can you find 25 different riding disciplines hidden in this word search?

Answers  
on page  
17.

1. Dressage
2. Saddle Seat
3. Harness
4. Eventing
5. Penning
6. Sorting
7. Reining
8. Over Fences
9. Side Saddle
10. Polo
11. Gaited
12. Pleasure
13. Hunter
14. Barrel
15. Speed
16. Driving
17. Roping
18. Trail
19. Hack
20. Halter
21. In Hand
22. Carriage
23. Working
24. Cutting
25. Equitation

|   |   |   |   |   |   |   |   |   |   |   |   |   |   |   |   |   |   |   |   |
|---|---|---|---|---|---|---|---|---|---|---|---|---|---|---|---|---|---|---|---|
| Z | T | E | B | T | U | P | A | O | V | E | R | F | E | N | C | E | S | T | K |
| B | S | Q | H | P | M | J | K | Y | F | Y | N | H | P | E | N | N | I | N | G |
| G | T | U | U | D | R | E | S | S | A | G | E | A | L | B | Y | W | P | L | M |
| T | V | I | N | C | A | R | R | I | A | G | E | R | T | R | A | I | L | K | E |
| Y | I | T | T | R | M | N | I | D | M | L | B | N | B | A | R | R | E | L | V |
| J | S | A | E | E | R | W | N | R | P | I | D | E | R | O | P | I | N | G | E |
| R | T | T | R | I | S | F | H | I | Q | E | R | S | M | A | T | X | A | X | N |
| S | S | I | C | N | I | N | A | V | G | N | K | S | B | W | V | Z | Z | J | T |
| P | O | O | U | I | D | Z | N | I | S | A | D | D | L | E | S | E | A | T | I |
| L | R | N | T | N | E | E | D | N | Y | D | V | H | T | L | Z | R | G | H | N |
| E | T | V | T | G | S | E | Q | G | O | A | B | A | N | Y | A | D | O | W | G |
| A | I | M | I | J | A | C | U | I | A | T | D | P | V | X | C | N | T | I | U |
| S | N | A | N | H | D | X | C | D | E | X | H | A | L | T | E | R | W | O | A |
| U | G | L | G | A | D | W | O | R | K | I | N | G | I | H | S | W | V | O | U |
| R | K | L | N | C | L | T | G | A | I | T | E | D | S | P | E | E | D | E | C |
| E | S | Z | B | K | E | Z | V | P | O | L | O | S | C | J | I | K | T | N | V |

Just For Fun

Just For Fun

Just For Fun



# Tropic Trucks

## East Ft. Myers Diesel Depot

Five Cummings Diesels Available



**2001 Dodge Ram 3500, Cummings Diesel, 4x4, Quad Cab, Dually. Loaded, Low mileage! Call Rick!**

Four 7.3s Available

**2002 Ford F-250 Lariat, 4x4, 40K miles, One owner, Extra Clean! Call Rick!**



**Over 75 Trucks to Choose From!  
IF WE DON'T HAVE IT, WE WILL GET IT!**



**2004 Dodge Ram 2500, Cummings Diesel, 4x4, Low miles. Save big! Call Rick!**

Bank Financing

**2003 Ford F-350 XLT, Flatbed, Crew Cab, 4x4, Diesel. Six Diesels to choose from! Call Rick!**



We take ANYTHING on trade!



**2003 Chevrolet Silverado 2500, Duramax Diesel, Allison Transmission. Four Chevys to choose from! Call Rick!**

**We can get you in a truck that fits your hauling needs!  
Inventory changes daily, call for new listings!**

**11230 Palm Beach Blvd., Ft. Myers  
Exit 141 East 2 Miles,  
Next to Maine's Best Seafood**

**floridapreownedtrucks.com**

**239-482-8822**



## For Rent:

One bedroom like new furnished mobile for rent on Horse Farm. \$650 includes all utilities (can be negotiated for farm help). Stall also available. 2 miles from US41 in South Fort Myers. Leave message at 239-433-3040 or 239-770-3629



12x12 Stalls ~ Round Pen ~ Arena ~ High Ground ~ Trail Riding



*Dream Catcher Stables*  
Horse Boarding  
Mike and Marcia Denius  
Owner on Premises



23261 Tuckahoe Road ~Alva, FL 33920  
(239) 693-9845 ~DreamCtchrStable@aol.com



7200 Carousel Lane  
Ft. Myers, FL 33912

**(239) 565-9298  
(239) 277-SPUR**  
Susan Brown

- Full line of English Riding Apparel
- Happy Mouth - Mountain Horse - Fleeceworks
- Ovation - Der Dau - Bobbies Bridles - Pessoa
- Wilkers - Royal Highness - and much more
- Paddock Boots - Tall Boots - IRH Helmets
- Mobile Tack Shop
- Competitive Pricing (including gently used consignment)
- Special Orders Welcome

**Tuesday through Friday  
10am to 6pm  
Saturday  
10am to 3pm  
By appointment Sunday and Monday**



# got pasture? NOT

Try a big bale to replace their grazing needs.  
You'll love it!

1350 lb bales  
in alfalfa,  
orchard, and  
orchard/alfalfa  
650 lb bales  
in alfalfa and  
orchard/timothy

Kelly and Perry Price's horse loves  
his pasture bale and new hay feeder!



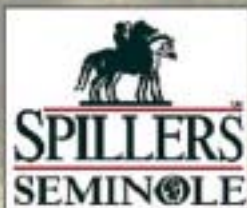
**We Deliver!**

75 lb bales  
in timothy,  
timothy/alfalfa,  
orchard/alfalfa,  
and alfalfa



**NOW DELIVERING FEED AND SHAVINGS:**

**WE DELIVER THE FULL LINE OF  
SEMINOLE FEED!**



**WE HAVE FOUR BRANDS  
OF SHAVINGS AVAILABLE!**

**OUTLAW  
SUNCOAST  
REGAL DOWNS  
AND ABM PELLETS**



Ask about the new portable hay feeder  
that will keep your pasture bale  
dry this summer!

**SWEET CYPRESS RANCH**

Quality Horses Idaho Hay Sundowner Trailers

Al Curry ★ ☆ ★ ☆ ★ Jo Carns

**863-673-6751**

275 Kirby Thompson Road  
Labelle, Florida

Lee

Lee

Lee

Lee

Lee

Lee

Lee



Lee



Big Horn  
Western  
Saddle,  
16" seat,  
Flex tree,  
Like new!  
239-  
410-5876

Lee

Lee



Chestnut Pony Mare, Grade. This English pony will jump 2.5 foot fences all day long! \$1,900 obo 239-470-2147



Lee

Lee



3 yearlings. 2 are Hancock bred fillies, one is a grade colt (sired by Scotch Bar Tommy)  
Starting at \$600 239-470-2147

Lee

## \$500 REWARD

Stolen 3/12/07 From  
Goggin Road and SR 80  
in Alva. 1 year old  
female Jack Russell.  
Child has put up reward  
of \$500 for the return of  
the puppy.  
(239) 707-6140



Lee



## Featherwind

### Boarding Stable

Basic Riding and Horsemanship  
Instruction for Boarders. Or your  
Trainer invited.

#### Full board \$375 mo, includes:

- Quality Feed and Hay
- Clean & Airy Stalls with Fans
- Two Large Wash Racks
- Riding Arena
- Daily Turnout
- Real Attention and TLC!

Owner/Manager on premises.

Bon Fire Cookouts, Kids  
Camps, and Loads of Fun!

Lisa Fisher  
Owner/Manager  
239-200-5226

**Beautiful Buckingham Trails!**

## PASO FINOS Exceptional Bloodlines



### Quality Stallions

Palomino • Grey • Pinto

Available for 2007  
Breeding Season

Horses For Sale

Randy & Nikky Vann  
Ft. Myers, FL

[www.cornercreekranch.com](http://www.cornercreekranch.com)

[rj@cornercreekranch.com](mailto:rj@cornercreekranch.com)

Se Habla  
Español

239-225-5890

239-574-2198

## ALVA ACREAGE BRING YOUR HORSES!!

- Estate Ranch in community of Riverfront Homes and Ranches with acreage
- 9.78 acres is cleared, entirely fenced and cross-fenced
- Custom pool home features 4 bedroom, 2 bath approx 3085 sq ft liv. area
- Beautiful 40'x60' Barn that is 1 yr old & has auto water, electric and AC
- 24'x40' detached workshop/room with electric, tv and air cond & much much more...



A MUST SEE! Gorgeous Estate Ranch in community of Riverfront Homes and Ranches with acreage. This 9.78 acres is cleared, entirely fenced and cross-fenced. It has dozens of mature oaks and pines. The custom pool home features 4 bedroom, 2 bath approx 3085 sq ft liv. area, 2 car oversized garage. A chef's dream island kitchen, a huge walk-in pantry, Riverslick fireplace with African rosewood custom mantel. Pool is less than 1 year old. Hot Springs spa. Whole house generator hook-up. a 24'x40' detached workshop/room with electric, tv and air cond. Security gate with key pad at entrance. Gorgeous 40' x 60' Stable/Barn less than a year old, six 12' x 12' stalls possible, air-conditioned tack room, extra storage room, wash area, open garage/storage area, 12' center aisle, auto water feeders and electric.

Associates Realty

WENDELL STUCKEY - 239-810-3312 CELL



**For Sale by Owner: \$399,000 Firm**

2.5 acre fenced and cross-fenced equestrian property on paved road across from 300+ acre county preserve with horse trails in North Fort Myers.

Very private 1990 sq ft CBS house built in 1990 with 10' wrap-around porch (all the way around!). Property includes:

- Great room style living room/dining room/kitchen with bay window, French doors, and two-sided fireplace
- 16'x30' master bedroom with 6-panel sliding glass doors to back porch
- Detached 3-bay CBS garage with half bath
- Permitted 2-stall pole barn has front and back gates and automatic feeders

Contact: j.harder@earthlink.net or 239-938-5270

**HARDESTY FARMS**

We Deliver Quality!

Serving Southwest Florida Since 1989!

|  |   |
|--|---|
| <p><b>T&amp;A and Orchard Grass Mix</b><br/>50-70 lb bale weight<br/>We harvest our own hay in Ohio and transport it directly to you!<br/>1st cutting<br/>2nd cutting<br/><b>BULK DISCOUNTS!</b></p> | <p><b>Large Compressed Alfalfa Bales</b><br/><b>Idaho Hay</b><br/>1400 lb Full bale<br/>700 lb Half bale<br/>65-70 lb Small bale<br/><b>BEST PRICE!</b></p> |
| <p><b>SCOTT HARDESTY</b><br/>239-777-0431</p>  | <p><b>BRIAN HARDESTY</b><br/>239-777-5451</p>   |

Free Delivery!

Lee

Lee

Lee

Lee

Lee

# CENTRAL FLORIDA EQUESTRIAN ESTATES

**Karen Giehl, Sales Executive**  
Office: 352-536-6758  
Cell: 352-267-2647  
Toll Free: 888-796-1642

**Della Barrett, Sales Executive**  
Office: 352-536-6422  
Cell: 352-406-5389



**19634 Florantine Circle  
Clermont, FL: \$439,000**

Gorgeous 4/3 with a beautiful deck overlooking 3+ acres with panoramic views of rolling hills. Perfect for entertaining. Tile floors, spacious rooms, bonus room and a 3 car garage. Comes complete with daylight basement & detached workshop. Must See! The front of the house is landscaped with several different types of palm trees, a total of 11. This house has everything you've been waiting for. Don't miss this great opportunity.



**16604 Sandhill Rd. Winter Garden, FL: \$645,000**

This 4/2/1 home sits on 4.59 acres. Located in an equestrian community. Formal living and dining area, wood-burning fireplace, lots of storage space, hardwood floors, and carpet. Property is fenced, has a pole barn w/ elec., and a wrap-around porch. Enjoy the peacefulness this property has to offer.



**10905 Yale Cove Rd,  
Leesburg FL: \$380,000**

Just reduced: This 3/2 home sits on 5+ acres with a private spring-fed pond. Just painted inside and out. Open floor plan. Huge bonus room, Split plan. Property is fenced and cross-fenced. 4-stall barn with tack room. Located on a dead end street. A must see!



**17951 W Apshawa Rd  
Clermont, FL: \$447,500**

Custom 4/3 2 story home with pool on one acre. Home has view of lake and sunset from 24 foot balcony from loft on second floor. Lots of wood laminate floors and tile. 37x17 foot 2nd Master Suite, game room, or ideal for Mother-in-Law!! So many extras. Totally fenced, irrigated with large shed with water and electric. 3 Zone A/C and large recreation room with its own bath, wet bar with its own A/C unit that exits to pool with heated pool and spa. Alarm system, Jacuzzi tub in master, low emission windows, oak cabinets in kitchen, automatic gate opener, great room and recreation room wired for surround sound.

Central Florida

Central Florida

Central Florida



# Are You 'Stressing Out' Your Horse?

Carey Williams, Ph.D., Extension Specialist in Equine Management

Published 8/3/2005 Fact Sheet #656

## What is Stress?

Stress is the body's response to anything it considers threatening. For a horse this could be anything, including trailering and traveling, showing, poor nutrition, feeding at irregular times, changes in other routines, environmental toxins, interactions within their social environment, variations in climate, and illness.

Some types of stress include various physical stresses that are based on the physical makeup of the animal and its ability to respond to changes in diet, injury, etc. Psychological stresses are based on a horse's personality and its perception of life. For example, some horses are more stressed than others by being in a stall for long periods of time.

## How do Horses Cope with Stress?

The horse's basic stress response starts with a change in behavior, either by moving away from a stimulus, swishing its tail, bucking, tensing up, etc. This stress will then cause activation of the sympathetic nervous system, called the "Fight or Flight" response. The sympathetic nervous system will create an involuntary action of the intestines (diarrhea), endocrine glands (production of adrenaline and cortisol), and heart (increase in heart rate). Next the neuroendocrine system will be activated, allowing the horse's system to increase its energy utilization.

Each horse deals with stress in a different way depending on their personality.

### *Demonstrative, Confident Horse*

- Lets you know when it is stressed!
- Bucks, kicks, bites, is very curious, mouthy, a troublemaker, etc.

### *Demonstrative, Fearful Horse*

- Worries about everything!
- Shies the first time it sees things and needs time to relax.

### *Passive, Confident Horse*

- Usually wonders, "What's everyone worried about?"
- Not normally stressed, internalizes stress, shows little change even when stressed.
- Usually is the last one in the field to take off running if something runs out of the woods.

### *Passive, Fearful Horse*

- Wants to please!
- Seems willing to do anything, but will tighten muscles and lips when stressed.
- Won't show fear until pushed over the limit.

## Heat Stress

During exercise heat production will increase up to 50 %. This can create a problem when exercising under extremely hot and humid conditions. In response to heat stress the horse will increase its sweating rate, move a large portion of blood flow to capillaries under the skin, and increase its rate of respiration (may be over 20 breaths per minute in a resting horse) to help in the cooling process. Some horses will have a condition called "anhidrosis", which is when the horse lacks the ability to sweat. This makes their coat feel very hot yet dry. The horse's number one means of cooling down is through evaporation. When it does not sweat it is not able to use this method of cooling and the risk of overheating is even greater! Another way horses will show heat stress is with an increase in resting heart rate. At rest a normal range of heartbeats per minute should be between 28 and 36, however, when heat stressed it can be over 50. Internal rectal temperature will also be elevated to 104°F or higher.

When treating heat stress, the first thing you will need to do is move your horse to a shady area. Provide fans, wind, or other forms of ventilation, which will help with the evaporation process. Spraying the horse with cold water, specifically the legs and abdomen, will also help in this

process because the veins and arteries lie just below the skin and can rapidly cool blood flowing to internal organs. Allow the horse to drink small amounts of water frequently and provide electrolytes to replace those lost by excessive sweating. In severe cases you should contact a veterinarian immediately. Cold-water enemas will probably be administered and the horse will be treated for dehydration.

Once a horse overheats it is much more likely to overheat again, so preventing heat stress before it is ever a problem is extremely important. One way to help prevent heat stress is to provide regular electrolytes in hot weather, especially if training hard where the horse may lose a large quantity of water through perspiration. Increasing the amount of fat in the diet will allow you to decrease the amount of grain you need to feed, while keeping the energy density of the feed high. Always cool horses down properly after exercise, allowing plenty of time and ventilation. Avoid riding in extreme heat and humidity if at all possible.

## Cold Stress

Horses fight cold weather by using energy to stay warm. As a general rule, a 1% increase in energy requirement is needed to replace energy loss from cold weather for each degree the temperature falls below the horse's critical temperature. Critical temperature is the temperature below which a horse starts to expend additional energy to provide warmth. This temperature for individual horses will vary because of fat cover, hair thickness, acclimatization of the horse to cold, hair/coat wetness, and wind chill. For example, horses clipped during the winter months will have a much higher critical temperature and will have to be blanketed to help thermoregulation. You can tell if a horse is losing too much heat if snow melts on its back instead of accumulating on top of its hair; shivering can also be an indication.

To help horses decrease their critical temperature, one needs to precondition them for cold weather. Making sure horses carry enough weight to use as energy and insulation is a good way to go into winter. Provide free choice grass hay during the winter months, which will allow the horses to always produce enough internal heat through gastrointestinal fermentation. Providing shelter from wind, rain, and cold is important. If you have a horse that is not allowed in the shelter with other horses it is a good idea to provide a blanket, especially when there is freezing rain. Be sure blankets are waterproof. A wet blanket may cause a horse to lose more heat than it would if it were not blanketed.

## Transport Stress

Below are some reasons why transporting can be stressful to your horse:

### • *Physical factors*

- unnatural sense of confinement
- withholding food and/or water
- noise and vibration of a moving vehicle
- balancing and bouncing during the ride
- poor ventilation
- presence of exhaust, dust, molds, manure, and urine

### • *Psychological factors*

- separation from the herd
- exposure to strange animals and environment

### • *Climatic factors*

- high internal temperature and humidity

### • *Health factors*

- dehydration
- fatigue from constant balancing

*Shipping Fever* is a respiratory disease that develops during or shortly after a trip. A primary factor in shipping fever is suppression of the immune system due to the stress of the trip. Other than shipping fever, transportation stress can cause dehydration due to reduced fluid intake, loss of appetite, hypocalcaemia (low Calcium) or hypomagnesaemia (low Magnesium), weight loss, dust inhalation and coughing, diarrhea, and also possibly tying-up.

Studies in the past decade have investigated numerous factors during transport to try and make a horse's haul more comfortable. Some of these factors include orientation of the horse in the trailer during transport, design of the suspension and ventilation of the trailer, quality of the transport environment and air quality, and generally the amount of stress a horse is under during various lengths of hauls. Most studies have shown that levels of the stress hormone cortisol to increase during transportation, along with greater fluctuations in heart rate (known as heart rate variability). Some studies have reported as much as a



6% weight loss during a 24-hour haul. Half of this weight was replaced over a 24-hour recovery period. Muscle enzymes called creatine kinase and aspartate aminotransferase (CK & AST) leak out of the muscle after a 24-hour haul. This is a potential indicator for muscle damage.

To decrease transportation stress it is recommended to keep your total travel time under 12 hours. If this is not possible, plan overnight stops where you can unload your horse and allow it to rest. It is also recommended to stop every 3 to 4 hours to offer the horse's legs a break from the vibration, and provide water every 6 to 8 hours of the trip. Cleaning the trailer thoroughly after each use will decrease the amount of dust inhaled. It is also a good idea to leave your horse's head untied or loosely tied to allow them to lower their heads if they need to cough. Always leave a trailer window or vent open to allow for better ventilation. Horses are much more tolerant of the cold than they are of dust. It is always a good idea to give a horse a few days to recover after arriving at the destination. If you are concerned about shipping fever you can monitor daily rectal temperatures, which will help you detect a problem before it gets serious. On long hauls especially, it is a good idea to provide things that are comfortable to the horse, such as their usual hay, water, grain, or bedding.

Are dietary adjustments necessary before hauling a horse? Many people use bran mashes before transporting horses, however, there is no benefit in doing this. Bran mashes are what nutritionists call a "comfort food". They make owners feel like they did the right thing for their horse, yet they are not proven to have any real nutritional benefit. Before long hauls, especially during competition, it is a good idea to put your horse on a vitamin E supplement (1000 to 2500 IU/day) to help them cope with the stress. Also, giving them vitamin C (7 to 10 grams) the day of and 2 to 3 days after transport can help reduce the risk of shipping fever. It is a very good idea to vaccinate your horses against respiratory disease at least 2 weeks before traveling. Remember to never ship a sick horse long distances. Also, allow plenty of time for your trip in case of emergencies—this will also decrease stress in the life of the person doing the transporting!

### Oxidative Stress

During the metabolism of oxygen, about 98% of the oxygen consumed forms water and carbon dioxide, however, about 1 to 2% of the oxygen is not completely reduced and instead forms reactive oxygen species (ROS—intermediate molecules formed during metabolism of oxygen). These ROS produce harmful effects and can degrade proteins, DNA, and fatty acids that make up equine cells. Some of these ROS include hydrogen peroxide (H<sub>2</sub>O<sub>2</sub>), singlet oxygen (1O<sub>2</sub>), and free radicals (an ROS with an unpaired electron).

Antioxidants are the body's way of combating the negative effects of the ROS. Some common antioxidants include: vitamin E, vitamin C, beta-carotene, glutathione, lipoic acid, selenium, cysteine, glutathione peroxidase, etc. 11. What is oxidative stress, and how does it affect my horse? Oxidative stress occurs when the body's antioxidants are overwhelmed by production of ROS. Antioxidant supplementation may be needed during times of stress that have been associated with an increase in oxidative stress. These include: intense and endurance exercise, rapid growth, reproduction, transportation, illness, or other types of stressful situations described above. When supplementing antioxidants, mixtures usually work best. It is important to avoid over-supplementation due to the fact that some of the antioxidant vitamins and minerals can be toxic to the system in extremely high doses.

### Stomach Ulcers

Are you giving your horse an ulcer? Did you know that 80–90% of all racehorses have ulcers? Also, 60% of all performance horses (including eventers, jumpers, and western performance events), and 30–40% of all dressage horses develop ulcers.

A horse's stomach secretes acid even when they are not eating, unlike in humans. However, only ½ of their stomach is protected against damage from the acid. When a horse grazes all day the roughage helps absorb the acid and the saliva produced neutralizes acid. Ingestion of a grain meal increases 'gastrin', a hormone that stimulates acid secretion. Therefore, it is important to always feed forage along with a grain meal. The main causes of stomach ulcers are changes in eating behavior, changes in management, or an increase in training intensity. Horses that are accustomed to being outside can develop ulcers after only 1 week of being kept in a stall, while others could develop them within 24 hours.

Some signs that a horse is developing ulcers include a change in attitude, poor appetite, colic, decreased performance, decrease in body condition, weight loss, and a dull or sour attitude. To prevent ulcers, you need to prevent stress and minimize the use of non-steroidal anti-inflammatory agents (NSAID) such as, phenylbutazone (Bute).

### Exertional Rhabdomyolysis (ER)

Other terms for ER are "tying-up", "azoturia", or "Monday morning sickness". This condition is muscle pain and cramping associated with exercise. Its main prevalence is in the middle gluteal or semitendinosus muscles of the hindquarters. There are sporadic or chronic forms of ER, which could be severe enough to decrease performance or end a

career. There are different causes of tying-up for different breeds, however, recurrent ER (RER) primarily affects Thoroughbreds, Standardbreds, and Arabians. Nervous two-year-old fillies are most severely affected due to the stress associated with their training regime. With these horses the incidence may increase in severity as fitness increases.

One way to test for ER is to take a blood sample after exercise and have the sample analyzed for CK and AST (muscle enzymes described above). These enzymes will be drastically elevated during a bout of ER and may even be elevated at rest in a horse that chronically ties up. The clinical signs that your horse is tying-up include: stiffness of gait in the hind legs, unwillingness to move, and sensitivity of touch to the affected muscles. These muscles will feel very tight or tense. In severe cases the horse's urine will be a brown or reddish color from the breakdown and excretion of the myoglobin in the muscle.

To treat a horse afflicted with ER, immediately move it to a box stall and call a veterinarian. Blanket the horse if weather is cool or hose the horse to remove sweat if weather is warm. Check for signs of dehydration using the skin pinch test and look at mucous membranes. Allow small frequent sips of water when the horse is hot, and free access to water when the horse is cool. Many other factors can contribute to tying-up. However, to help decrease the incidence of the disease attempts should be made to decrease training-induced stress. Dietary changes and vitamin E supplementation may also help in some cases.

### Summary of How to Minimize Stress in Your Horse's Life:

- Keep horses turned out as much as possible but if not possible, feed *ad libitum* hay.
- Stick to a routine but if you need to make changes, do so slowly.
- When traveling take items that are familiar (e.g. your own hay, water, grain, etc.).
- Avoid riding in extreme weather conditions.
- Feed a well balanced diet.
- Maintain a good health program.
- Provide a pleasant environment.
- Provide regular varied exercise.
- Allow for play time.
- Prevent boredom.
- Allow your horse social activity.
- Keep *yourself* happy, healthy, and stress free!!

### References and Other Recommended Reading:

Anon. 2002. *Equine Industry Welfare Guidelines Compendium for Horses, Ponies, and Donkeys*. (A. Michael, ed.). [www.adas.co.uk/equinewelfare/compendium.pdf](http://www.adas.co.uk/equinewelfare/compendium.pdf).

Andersen, K. 1996. *Winter Care for Horses*. Univ. of Nebraska Cooperative Extension Fact Sheet, #G1292.

Grandin, T. 1997. *Assessment of Stress During Handling and Transport*. J. Anim. Sci. 75: 249-257.

Malinowski, K. 1993. *Stress Management for Equine Athletes*. Rutgers Cooperative Research and Extension Fact Sheet, FS716.

Ralston, S.L. 1994. *Performance Horse Conditioning and Notes on Conditioning*. Rutgers Cooperative Research and Extension Fact Sheet, FS752.

Valberg, S. 2005. *Equine Exertional Rhabdomyolysis: Management of Sporadic and Recurrent Exertional Rhabdomyolysis*. Mid-Atlantic Nutrition Conference Proc. p. 197-203.

Williams, C.A., D.S. Kronfeld, T.M. Hess, J.N. Waldron, K.M. Crandell, K.E. Saker, R.M. Hoffman, and P.A. Harris. 2004. *Antioxidant Supplementation and Subsequent Oxidative Stress of Horses During an 80km Endurance Race*. J. Anim. Sci. 82:(588-594).

[www.esc.rutgers.edu](http://www.esc.rutgers.edu)

[http://  
esc.rutgers.edu/  
publications/  
general/FS656.htm](http://esc.rutgers.edu/publications/general/FS656.htm)





**Homestead Everglades Posse**

presents...

**2007 Schooling & Speed Challenge**

at the Homestead Rodeo Arena

1D 2D 3D Jackpot/Cloverleaf/Texas Barrels/Poles  
Western & English Pleasure and Showmanship

Grooming &amp; Color Classes

**\$30-\$50 Yearly Membership Option or \$10 One-Time Event Fee  
(no membership)****\$5.00/Class or \$45.00 Enters All (Excluding Jackpot \$20)****Ribbons to 6<sup>th</sup> / New Electronic Timer / Adult & 12 and Under****Dates: March 3, April 14, May 12**

Registration 9:00AM / Speed Events 10:00AM

Schooling Classes Not Before 11:00

**Summer Dates: June 9, July 14, August 11**

Registration 3:00PM / Schooling at 4:00PM

Speed Classes at 6:00PM

*10% Profit Donation to SPCA of Florida*

For Information call Karen 305-322-7133

**Southcoast Performance Horse Club****NEXT SHOW: MAY 26<sup>TH</sup>!**Lee County Posse Arena  
Sign-ups at 8am,  
show starts promptly  
at 9amCome check out the Hot New Club in  
Lee County offering unique circuit  
classes, lots of Jackpots, quality  
judges, and an up-to-the-minute website.

\*1H. Grooming and Conditioning  
2. Jackpot Halter  
\*3H. 2yo and younger Mares  
\*4H. 3yo and older Mares  
\*5H. 2yo and younger Geldings/  
Stallions  
\*6H. 3yo and older Geldings/Stallions  
\*7H. Stock Halter  
\*8H. Non-Stock Halter  
\*9H. Open Mares  
\*10H. Open Geldings/Stallions  
\*11H. Open Color  
\*12. Ranch Horse Conformation  
\*13. Youth Halter (18 & U)  
\*14. Natural Horsemanship - On Line  
Sponsored by Guardian's Farm  
**10 min break**  
\*15. Novice Showmanship  
\*16WP. Showmanship 18&U  
\*17WP. Showmanship 19&O  
\*18. Bareback Pleasure (Eng & West)

\*19. Leadline (age 6&U, West. & Eng)  
\*20. Open Walk (all ages, Eng & West)  
21. Jackpot West. W/T (any rider)  
\*22. West. W/T 12&U (non-lop-  
ing rider)  
\*23. West. W/T 13&O (non-lop-  
ing rider)  
\*24. West. W/T HMS 12&U  
\*25. West. W/T HMS 13&O  
26. Jackpot Western Pleasure  
27. Open Schooling Western Pleasure  
\*28W. Western Pleasure 18&U

\*29W. Am Western Pleasure 19&O  
\*30W. Jr. Horse Western Pleasure  
\*31W. Sr. Horse Western Pleasure  
\*32W. Open Western Pleasure  
\*33W. Western Disciplined Rail  
\*34. W/T Trail  
\*35WP. Trail 18&U  
\*36WP. Trail 19&O  
\*37WP. Western Horsemanship  
18&U  
\*38WP. Am. Western HMS 19&O  
\*39P. Western Riding 18&U  
\*40P. Western Riding 19&O  
\*41. Novice Working Ranch Horse  
All Age  
\*42P. Youth Working Ranch Horse  
\*43P. Am. Working Ranch Horse  
19&O  
\*44. Open Working Ranch Horse  
45. Jackpot Reining  
\*46. Novice Reining All Ages  
\*47P. Youth Reining 18 & U  
\*48P. Amateur Reining 19 & O

\*49P. Open Reining  
**15 min break**  
50. English W/T Jackpot  
\*51. English W/T 12&U  
\*52. English W/T 13&O  
\*53. English W/T Equitation 12&U  
\*54. English W/T Equitation 13&O  
55. Jackpot English Pleasure  
\*56E. English Pleasure 18&U  
\*57E. Am. English Pleasure. 19&O  
\*58E. Jr. Horse English Pleasure  
\*59E. Sr. Horse English Pleasure

\*60E. Open English Pleasure  
\*61E. English Equitation 18&U  
\*62E. Am. English Equitation 19&O  
**30 min dinner break**  
63. Exhibition Barrels  
\*64G. PeeWee Barrels  
65. Jackpot Barrels  
\*65G. Jr. Barrels  
\*67G. Sr. Barrels  
\*68G. Adult Barrels  
\*69G. JB Barrels  
\*70G. PeeWee Mystery Skill Class  
\*71G. Jr. Mystery Gymkhana Class  
\*72G. Sr. Mystery Gymkhana Class  
\*73G. Adult Mystery Gymkhana Class  
75. Jackpot Poles  
\*76G. PeeWee Poles  
\*77G. Jr. Poles  
\*78G. Sr. Poles  
\*79G. Adult Poles  
\*80G. JB Poles  
\*81G. PeeWee Peppermint Twist  
\*82G. Jr. Peppermint Twist  
\*83G. Sr. Peppermint Twist  
\*84G. Adult Peppermint Twist  
\*85G. JB Peppermint Twist  
\*86G. Open Keyhole Express

\$6 for members

\$10 for nonmembers

call 239-433-3040 or preregister online!

**www.geocities.com/southcoastphc****PGHA Tack & Rummage Sale****Saturday May 5<sup>th</sup>****9:00am to 4:00pm****Set-up 8:00am**Can't see the floor in  
your tack room?  
**Sell your surplus!**Tack room a  
little bare?  
**Come shop!**May 5<sup>th</sup> is also a  
**Double Judge  
Show!**  
(Halter,  
Performance &  
Hunter/Jumper)Carmalita Athletic Park  
6905 Florida Street,  
Punta Gorda, Florida 33950  
941-627-1628Please provide your own table(s) and person to  
man them. Registration is due no later than Friday,  
May 4<sup>th</sup>. Please fax to 239/261-3580 or call Ali  
Josselyn at 239/825-4533. Cost to sell: Member  
\$10.00, Non Member \$25.00, Vendor \$50.002006-2007  
Show Season**Punta Gorda Horseman's Association**

www.puntagordahorsemans.com

**Performance and H/J show dates**

October 7, 2006

February 3, 2007

November 4, 2006

March 3, 2007

December 2, 2006

April 7, 2007

January 6, 2007

May 5, 2007

Hunter/Jumper Director, Andrea Schmeiske (941) 626-3622

Performance Director, Marlene Tehrani (941) 639-5313, (941) 286-1250

**Speed Show Dates**

October 14, 2006

February 10, 2007

November 11, 2006

March 10, 2007

December 9, 2006

April 14, 2007

January 13, 2007

May 12, 2007

Exhibition Barrels- Start 3 PM Show start promptly at 5 PM

Speed Show Director, Gayle Rogers 941-637-8097

Entry Fees: \$7.00 Members/ \$10.00 Non-Members  
\$5.00 Exhibition- must be appropriately attired**Visit the Web Site**for complete showbills, show times,  
rules & regulations, and directions.**www.puntagordahorsemans.com**





**GREENBRIAR EQUESTRIAN CENTRE, INC.**

PROUDLY PRESENTS

- **\$400.00 JUMPER GAMBLERS CHOICE**  
Jump for the Stars 6 pm  
\$200 Gamblers Choice 2'3"      \$200 Gamblers Choice 3'  
May 8, June 12, July 10, August 14, September 11, October 9  
\*\*\*\*\*
- **\$500.00 HUNTER CLASSIC 8:30 am**  
May 27, September 8, October 27, December 15  
\*\*\*\*\*
- **\$300.00 GYMKHANA 8:30 am**  
September 1, November 10  
\*\*\*\*\*
- **Schooling Event 3 Phase**  
November 24

TRAINER'S AWARD OFFERED, PLEASE CONTACT US FOR DETAILS

Mailing: PO Box 57, Alva, FL 33020  
Physical: 1835 The Thompson's Way, Lighthouse Point, FL 33062  
(239) 464-0877, Fax No. (239) 728-5775


[www.greenbriarequestrian.com](http://www.greenbriarequestrian.com)  
Please visit our web site for updated show information & directions



10 Acres, Custom Home, 3550 sq. ft. 4 Bd. 3.5 bath. (5036 sq.ft. under roof) on a rolling hill with pool and hot tub. Additional garage, Paved driveway. **\$539,000** For photos & info: [www.eyespike.com/land](http://www.eyespike.com/land) (386)-758-8327 or (386)984-9284



Beautiful Paints and Quarter Horses for sale. Well Mannered and handled daily. Studs, mares and foals! Prices range from \$1,500 to \$3,000. 863-673-1594




**South Eastern Distance Riders Association**  
**SEDRA**

"...to educate, promote and encourage participation in equestrian competitive distance events throughout the southeastern United States..."


**June 23<sup>rd</sup> and 24<sup>th</sup>**  
**SEDRA Distance Clinic**  
Annual Meeting and Awards Banquet  
Southeastern Livestock Pavilion, Ocala, Florida.

Plan now to join us for a half day Saturday and full day Sunday for Dinah Rojek's "Beyond the Basics" seminar, with a FREE lunch offered both days. The Awards presentation on Saturday afternoon/evening is always a meaningful and exciting occasion, and the reasonably priced Banquet is sure to satisfy most taste buds! Don't forget...National Trails Day, June 2nd...where would we be without trails? Hope you can celebrate in a forest near you!

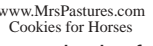
**SPONSORED IN PART BY:**



[www.BOZSADDLERY.com](http://www.BOZSADDLERY.com)  
PRESENTS  
THE PERFECT SADDLE  
[www.TheDistanceDepot.com](http://www.TheDistanceDepot.com)  
866-863-2349



[www.a-b-c-plus.com](http://www.a-b-c-plus.com)  
**ARMOUR GATES**  
[www.armourgates.com](http://www.armourgates.com)



[www.MrsPastures.com](http://www.MrsPastures.com)  
Cookies for Horses

Call, email, or visit the web site for more information!

**407-365-5601      [sedra04@aol.com](mailto:sedra04@aol.com)**  
**[www.DistanceRiding.com](http://www.DistanceRiding.com)**

Answers to word search found on page 9.

|   |   |   |   |   |   |   |   |   |   |   |   |   |   |   |   |   |   |   |
|---|---|---|---|---|---|---|---|---|---|---|---|---|---|---|---|---|---|---|
| V | N | I | K | I | C | J | S | O | L | O | V | Z | E | K | B | Z | S | E |
| C | E | D | E | S | P | E | E | D | S | A | I | T | G | A | I | T | C | N |
| U | O | V | W | I | H | S | I | N | G | I | N | K | I | O | R | K | I | N |
| A | O | V | W | I | H | S | I | N | G | I | N | K | I | O | R | K | I | N |
| U | I | C | N | T | I | U | A | V | I | C | U | I | A | V | I | C | U | I |
| I | G | W | O | A | D | O | N | A | B | A | N | A | B | A | N | A | B | A |
| N | H | N | Z | R | G | H | N | Z | R | G | H | N | Z | R | G | H | N | Z |
| I | T | A | S | E | A | T | I | T | A | S | E | A | T | I | T | A | S | E |
| T | J | Z | V | W | B | S | K | N | G | V | A | N | I | C | N | I | S | S |
| N | X | A | T | S | M | A | T | S | M | A | T | S | M | A | T | S | M | A |
| E | N | G | E | R | O | P | I | N | G | E | R | O | P | I | N | G | E | R |
| V | L | R | E | L | B | A | R | E | L | V | L | R | E | L | B | A | R | E |
| E | K | I | L | A | R | R | I | A | G | E | R | I | A | G | E | R | I | A |
| M | P | L | W | B | A | L | A | G | E | R | I | A | G | E | R | I | A | G |
| G | N | I | N | G | A | G | E | R | I | A | G | E | R | I | A | G | E | R |
| B | S | O | H | P | M | J | K | F | Y | F | N | H | P | E | N | N | I | N |
| K | T | E | B | T | U | P | A | O | V | E | R | F | E | N | C | E | S | T |

Columbia  
Columbia  
Columbia  
Hendry  
Hendry  
Hendry

# Horse Tales

Sponsored by

TRIPLE F TRAILERS, INC.

FFF

Horse Trailer Specialists

Susie Flint, owner

239-731-9900

Toll-Free 877-731-9901

Fax 239-731-9902

Cell 239-633-5579

8050 Bayshore Rd.  
N. Ft Myers, FL 33917



Safe. Secure. Smart.



Triple F Trailers - supporting the community by sponsoring this outlet for aspiring authors, artists and story tellers.

## Thanks for the hospitality!

Have you ever had one of those moments? You know, one of **THOSE** moments...the ones where it is just a split second too late to stop the inevitable.

Last month when I was delivering Everything Equine to Lee County, I shut my truck door and knew instantly that it was not a good thing. I had hit the lock button on the inside of my door handle, grabbed a stack of magazines, and shut the door. The problem was that the keys were inside my truck and it was running. I tried to regain control of the door as it was closing, but it was too late. I was locked out. Thank goodness, I had just filled up my tank with fuel. AAA will not bring you diesel if you run out of that! (I know this from personal experience, but that is a **WHOLE** different story!)

I would like to thank the employees of Parker-French Ace Hardware, on Palm Beach Blvd. for their hospitality during my ordeal. It took quite a while to get a locksmith and in the meantime, the employees took really good care of me.

And yes, I should have had a hide-a-key. I know that now.

Thank you Parker French Ace Hardware, Inc.

Sincerely,

*Melody Halperin*



**Parker-French Ace Hardware, Inc.**  
14308 Palm Beach Blvd.  
Fort Myers, Florida 33905  
Store # 18777  
239-694-3958  
239-694-3482 FAX

Another drawing by Elizabeth Halperin, Age 7







# Kalija



He was rescued at an auction and in return he rescued our hearts. He was loved by so many, kind of a community horse.

He had lots of love to give especially to the kids. He was the horse on which several of our children learned to ride. Mariah, Shawna, Ali, and Haley are a few and that's pretty good for a stallion whom a former owner didn't even know was broke to ride. Because he was such a "babysitter", no one knew he was a stallion until they were told. He was the stallion that dawned pink tack and so carefully took Haley and so many more young girls safely around the barrels at many NBHA shows.

This gentleman loved the mares and leaves approximately 15 beautiful foals locally which all carry his wonderful personality. His gentle heart lives on in them.

Kalija will be missed.



Horse tales is an area where original, unpublished works by local writers and artists will be featured. If you have a short story, poem, work of art or anything that you've created and are interested in seeing in print, please submit to Everything Equine. Everything Equine and local businesses provide this opportunity for children and adults alike to show their creative abilities and talents to the entire community. Please limit your submissions to horse related tales that coincide with an equestrian or farm oriented way of life.

Osceola



Osceola

## Horseback Safaris

**Horseback Safaris** - Standard one-hour, two-hour, or three-hour horseback safaris are available daily. Horseback Safaris can be arranged for riders with varying levels of experience. All guests should be at least 12 years of age; 10 years of age is an acceptable age with proven riding experience. Guests weighing more than 275 pounds will need to be assessed by our Equestrian Director before they are allowed to take a Horseback Safari. Call-in reservations are recommended in order to assure that we and our horses are ready for you.



A favorite with visitors is our two-night "Crescent J Cattle Drive Weekend Safari," which includes some training in Florida Cowhunter skills of ridin', ropin' and cow cuttin'. (Florida cattlemen weren't "cowboys" because hunting those wild Spanish-descent cattle in Florida's woods and swamps was a man's job, they said.) Choice of campground depends on weather, type of group and recommendation of the riding instructors.

Another favorite is similar, but shorter – an Overnight Trail Ride Safari combined with a next-day "Rawhide Roundup." More time is spent riding the wilderness trails of Forever Florida and learning about nature, less on cowpoke skills.

Corporate Co-workers, Schoolteachers, Professional Club, Flying Clubs, School Groups, Church Groups, Families, Friends, Scout troops or multi-troop Camporees – there are activities and a campground on Forever Florida or the Crescent J Ranch that are just right for a bonding experience. See the Facilities and Events page for more details.

From a small primitive one-troop Scout Camp on the Crescent J that has been used by Girl and Boy Scouts for more than 30 years, we expanded to a remote but up-scale campground 'way back in the wilderness of Forever Florida, then added two campgrounds in between and most recently, a large area "up front" (near the highway) that comfortably holds up to twenty Scout troops for a big Camporee.

Variations on these basic campouts and safaris can be worked out with our staff.

# 1-888-957-9794

[www.floridaeco-safaris.com](http://www.floridaeco-safaris.com)

Osceola

Osceola

Osceola

Osceola

## The next drawing is for a two hour horseback safari for two!

Congratulations to Marc Meashikoff of Loxahatchee, FL. He won last month's drawing for a two hour Horseback Safari for two at Forever Florida!

Enjoy the ride!



There will be another drawing next month, so send in your entry form! Winner is chosen by luck of the draw. Odds of winning depend on how many entries received.

Congratulations to Susie George, who won last month's drawing for MD's Choice supplements.

## MD's Choice and Forever Florida Give-A-Way 4 ways to enter

- 1) By mail. Use entry form below.
- 2) Email your request to be entered to [everythingequine@swfla.rr.com](mailto:everythingequine@swfla.rr.com).
- 3) Automatically be entered by posting on the bulletin board.
- 4) Automatically be entered by submitting a classified ad.

## Enter To Win

*One form per month enters you in all monthly drawings!*

Name \_\_\_\_\_

Address \_\_\_\_\_

Phone Number \_\_\_\_\_

Alternate Number \_\_\_\_\_

Email Address \_\_\_\_\_

If your name is drawn for the MD's Choice Products, please indicate if you would like Arthrosamine for  
☐ Dogs or ☐ Humans.

Mail to:  
 Everything Equine  
 460 6th St NE  
 Naples, FL 34120

Must receive entry by the 20th of the month. One entry per person per month. Winner is chosen by luck of the draw.



Submit your club or organization's event and it will be posted free  
on a space permitting 1st come 1st serve basis.

# May 2007

| Sun   | Mon  | Tue | Wed | Thu | Fri  | Sat   |
|---|--|-----|-----|-----|--|---|
| <b>May 5-6, 2007</b><br>Phil Rogers Clinic<br>Springbrook Inn Bed &<br>Breakfast & Equestrian Ctr.<br>Niota, TN<br><a href="http://www.DixiePlantation.com">www.DixiePlantation.com</a> |  | 1   | 2   | 3   | 4<br>Friday night<br>Jackpot Lee<br>County<br>Posse Arena<br>8pm   | 5 <br>PGHA Show—see page 16  |
| Natural Horsemanship clinics - Everglades Ranch.<br>See Page 4  |  |     |     |     |  |   |
| 6   | 7  | 8   | 9   | 10  | 11   | 12 LCHA Speed Show,<br>Horse/Tack & Trailer Auction<br>1pm Columbia County<br>386-755-7104<br>PGHA Speed Show,<br>see page 16   |
| 13 <br>Mother's Day  | 14   | 15  | 16  | 17  | 18   | 19<br>NBHA District 10 - Exhibition<br>starts at 10am / Show starts<br>at Noon Lee Co Posse<br>PGHA Free Clinic - see pg 16<br><a href="http://www.johnparkerarenainc.com">www.johnparkerarenainc.com</a><br>speed show Arcadia |
| 20<br>LCHA Performance Show   | 21<br>Ad Deadline  | 22  | 23  | 24  | 25   | 26<br>SPHC show See page 16   |
| 27<br>Lee County Junior Posse - Signup<br>starts at noon, Show starts at 1pm<br>Lee Co Posse Arena  | 28 <br>Memorial Day | 29  | 30  | 31  | May 4, and 5, <b>Biltmore Challenge (FEI)</b> , 50/100 miles at the Biltmore Estate, Asheville, NC. Contact Cheryl Newman @ 828-665-1531 or <a href="mailto:cherylnewman@charter.net">cherylnewman@charter.net</a> |   |

## Ad deadline is the 21<sup>st</sup> of the month.

## Classified Ad Rates

|  | Black and White     | Color |
|--|---------------------|-------|
|  | (Please circle one) |       |
| Small 1/12 page  | \$12                | \$24  |
| Medium 1/8 page  | \$18                | \$35  |
| Large 1/6 page   | \$24                | \$46  |
| Includes Photo and 30 words, additional words \$0.25 each    |                     |       |
| Text only ads include 60 words, additional words \$0.25 each |                     |       |

Description: (one word per box, may use additional paper if necessary)

|  |  |      |
|--|--|------|
|  |  |      |
|  |  |      |
|  |  |      |
|  |  |      |
|  |  |      |
|  |  |      |
|  |  |      |
|  |  |      |
|  |  |      |
|  |  | (30) |
|  |  |      |
|  |  |      |
|  |  |      |
|  |  |      |

## Business Ad Rates

|               | B/W   | One Color | Full Color |
|---------------|-------|-----------|------------|
| Front Cover   | n/a   | n/a       | \$360      |
| Inside Cover  | \$234 | \$272     | \$325      |
| Back Cover    | n/a   | n/a       | \$340      |
| Centerfold    | \$349 | \$412     | \$499      |
| Full page     | \$214 | \$246     | \$299      |
| 1/2 page      | \$133 | \$149     | \$176      |
| 1/4 page      | \$90  | \$101     | \$123      |
| 1/6 page      | \$74  | \$84      | \$101      |
| 1/8 page      | \$53  | \$58      | \$69       |
| Business card | \$38  | \$42      | \$48       |

**Save 10% by prepaying for three months.**

## Classified or Business ad?

Classified ads are for selling a tangible item. 2 photos of the same item can go in a LARGE classified ad. Two or more items can be listed in the same classified ad if it is text only (no photo) or if they are closely related and being sold together. (a pair of mules or horse w/ cart) Classified ads can not list business information. A web address may be listed in a classified ad **ONLY IF** more information about the item for sale is listed on the web site.

Business ads are for services, such as boarding, farrier or stud, and/or any ad that contains a business name or information.

Name: \_\_\_\_\_

Address: \_\_\_\_\_ City: \_\_\_\_\_ St: \_\_\_\_\_ Zip \_\_\_\_\_

Phone #: (        )        -        Email: \_\_\_\_\_

County: \_\_\_\_\_

Credit Card #: \_\_\_\_\_ Expiration Date: \_\_\_\_\_ \$: \_\_\_\_\_

Everything Equine  
460 6th St NE  
Naples, FL 34120  
or

Office: 941-375-2029 or 239-403-3784  
Fax: 941-870-2510  
Email: [everythingequine@swfla.rr.com](mailto:everythingequine@swfla.rr.com)



email digital ad to [everythingequine@swfla.rr.com](mailto:everythingequine@swfla.rr.com). If you email your ad, PLEASE do not include payment information. We will call you for your credit card information. There is no charge for ad development; however, all ads created by Everything Equine are the sole property of Everything Equine. If ad is to be used in other publications, an additional fee will be assessed.





# Where does Your Joint Supplement End Up?

Because of its large molecular size, the Chondroitin Sulfate found in most joint supplements is difficult for the body to absorb. More than 70% usually ends up in the manure! In addition, recent studies have shown that very little Glucosamine HCl — another ingredient commonly found in joint supplements — gets into the joint tissue. So, how effective is the joint supplement *you're* using?

Gluquestrian™ uses human-grade Glucosamine Sulphate 2KCl and Cardinal MSM. It has been proven that up to 98% of Glucosamine Sulphate is available to the joints within only 30 minutes! When used regularly, Gluquestrian™ is an extremely effective treatment for Navicular Syndrome, arthritis, spavin, laminitis, joint injuries and many other joint related problems. And Gluquestrian™ comes with a unique **Results Based Guarantee**, not just your usual money back guarantee that is only good for 30 days.



"May 2004 I was told by my farrier and vet that I needed to put my horse down and there were no other 'humane' options. My ... horse had foundered so badly that his coffin bone had rotated to 16°. Dee Matlock, of Singing Springs, told me ... that Gluquestrian was the best joint supplement on the market, and that if it wouldn't help nothing would. ... I tried it, and ... I saw results. It really worked! ... My horse is sound! I am riding him again! Now I'm adding the Total Mobility EQ for the contracted hoof." - *Tammy Nute*



**Ask about our highly effective human and canine formulas!**



For individual consultation and to find a dealer in your area, call  
**1-800-628-0997**

## RESULTS BASED GUARANTEE

Our guarantee covers the initial treatment period, usually 6 to 24 weeks, depending on the problem. (For serious problems, please call us for the most effective dosing.) You **WILL** see results or get a full refund for the containers you purchased (limit 3 containers).

Dealer Inquiries & Sales Reps welcome. Call 800-511-4613.

For more information on our products, visit  
**[www.vetsupplements.com](http://www.vetsupplements.com)**



-S

# BAR CRESCENT S RANCH

*There's Power In The Blood*



"You Don't Have To Go West To Find The Best."

## Performance Horse Sale

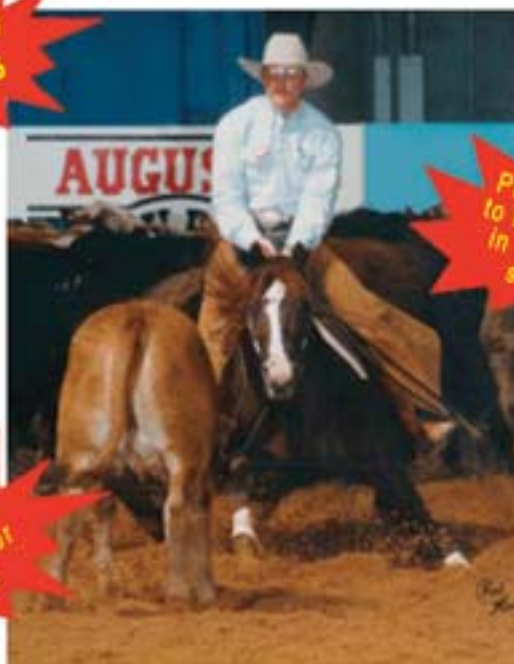
Saturday, May 12, 2007 2:00pm

Sidney Roberts Road New Zion, FL

40 to 50  
Horses

We will also  
have consignments from  
Lake Cattle Company  
of Okeechobee, FL and  
White Farms of  
Chiefland, FL.

Haidas Little  
Pep-  
Winner of over  
\$425,000



Please RSVP  
to be included  
in the lunch  
served.

Inventory will include:  
Mares with babies at side,  
Weanlings and  
Young started horses.



The above, Haidas Little Pep, is the sire of one of our young studs  
as well as sire to many of our brood mares.

For additional information, catalog,  
or to RSVP, please contact  
Denice at 863-733-0809  
or email us at  
[ducksmith@barcrescentsranch.com](mailto:ducksmith@barcrescentsranch.com)  
[www.barcrescentsranch.com](http://www.barcrescentsranch.com)

6 miles west of Ona on Hwy. 64  
or  
Approximately 35 miles east of  
Bradenton on Hwy. 64

Turn at the New Zion Baptist Church sign, off of Hwy. 64  
(look for the 'Horse Sale' sign). Proceed down Sidney  
Roberts Road to the ranch entrance on the left  
(there will be a sign directing you).

The closest hotel is in Wauchula, FL.  
The Best Western 863-773-2378