

# Everything Equine

Free

August 2005  
8th edition

© 2005 Everything Equine

## RATHER B INVESTING

### 2001 AQHA IF Gelding Offered For Sale

AQHA points in Western  
Pleasure, Western  
Horsemanship, English  
Pleasure and English  
Equitation. Trained by  
Sandra Vaughn For  
Pleasure Driving.  
Started over fences.

Good prospect for Youth  
or Amateur rider.



\$8,500

Joanne  
Lanzisera

239-404-3376



# Everything Equine

460 6th St NE  
Naples, FL 34120

Office Phone  
239-403-3784  
239-353-5167 Fax  
(fax will pick up after 6th ring)  
everythingequine@swfla.rr.com

Melody Halperin  
Collier County  
239-370-5945cell

Sherri May  
Lee, Hendry and Charlotte Counties,  
239-229-8533

Comments and/or suggestions  
are welcome!

Subscriptions are available,  
please contact us directly.

Every attempt has been made to ensure that the content is free from errors. If you feel an error has been made, please bring it to our attention. We do not endorse and are not responsible for the validity or quality of products and services advertised or items placed for sale.

## Browse by County:

Citrus pg 8

Collier pgs 3-7, 10,

Front & Back Cover

Highlands pg 17

Internet pg 6

Lee pgs 10-11 & 14-17

## Special Features:

Body Score pg 13

Equi-cise pg 12

Horse Tales pgs 18-19

## At Your Fingertips:

Calendar pg 4

Resource Directory pg 20

Classified Rates pg 21

Business Rates pg 22

## Lost cat update!

Last month, I ran a lost ad for my own personal (stray that moved in to my house 2 years ago) cat. He was gone 3 1/2 weeks and I was for sure he was a goner. The day hurricane Dennis was due west of Naples, I took out some trash and lo and behold, there was my cat! He was skinny and full of fleas, but he instantly meowed at me. I could not believe it. I swooped him up and ran in the house to show my son and daughter - who seems to think he is 'her' cat. It was truly a joyous day. Our prayers were answered and we are so thankful for his safe return. I know how it feels to have a part of your heart missing. Some days, I found it hard to leave the pound because going to the pound gave me hope and leaving meant hope was lost. It was such an empty feeling. My hope for everyone out there is that some day your beloved pet will show up on your porch as 'my daughter's' cat did. Until that day - **don't lose hope!**

~Melody

# Does your horse have difficulty maintaining weight in the summer?

Contact Patty Brodersen,  
distributor of  
Dynamite Products.

**Dynamite has supplements tailor-made for your needs. The following are for digestion, feed utilization, and weight gain:**

Dyna-Pro(tm)  
Excel(tm) \*  
HES(tm) Pellets  
Complete Pelleted Grain Ration  
Miracle Clay(tm)

**Contact Patty today for a consultation to determine which product suits your needs!**

## Dynamite®

**The Dynamite® Motto  
Excellence through Nutrition**

Dynamite carries products for humans, horses, cats, dogs, exotics, birds, and the earth!

### EXPAND YOUR EDUCATION!

Nutritional Reflex Points ~ Parasite Reflex Points ~ Your horse probably has a rib out of place ~ Acupuncture meridians in your horse's feet ~ How to eliminate energy blocks ~ Common Feeding Mistakes

**Learn how to identify & fix these problems from Holistic Therapy Services, of Citra Florida - Week long seminar in October. Contact Patty for more information!**

**239-825-0964**  
equinemajic@swfla.rr.com

[www.DynamiteOnline.com/patriciabrodersen](http://www.DynamiteOnline.com/patriciabrodersen)

© 2005 Everything Equine



*a living and growing store*

14765 Collier Blvd.  
Naples, FL 34119

(CR 951) Located between Vanderbilt  
Beach and Immokalee Roads

Visit our beautiful walk-through garden

**Phone**

**239-455-7233**

**Fax**

**239-455-8866**

#### Livestock & Pet Needs

Wide Selection of Quality

Feed and Hay  
Hay rolls

Western & English Tack

Lg & Sm Hay Cubes

Pet Food and Supplies

Pest/Fly Control

Fencing & Gates

Feed & Water Troughs

Mats & Shavings

Show Needs

Stall Supplies

#### Garden & Landscape Needs

Landscape & Interior Plants

Sod & Mulch

Pottery & Ornamentals

Tropical Fruit Trees

Natural Stone

Garden Tools

Plumbing Supplies

Water Softening Salts

Fertilizer

Hardware

Seeds

**Open 7 days a week!**

**Mon-Fri      Saturday      Sunday**  
**7am to 6pm    7am to 5pm    8am to 4pm**

**Delivery Available**

© 2005 Everything Equine

Collier

Collier

Collier

Collier

Collier

Collier

Collier



Submit your club or organization's events and we will post them free on a space permitting 1st come 1st serve basis.



# AUGUST 2005



| Sun   | Mon    | Tue  | Wed   | Thu  | Fri  | Sat                                 |
|-------|--------|--|---|--|--|-------------------------------------|
|       | 1      | 2<br>Every Tues<br>Roping 6-9pm<br>\$15 Alva, FL<br>863-673-6751                       | 3<br>Every Wed<br>Youth Steer<br>Riding, \$5/ride<br>Alva, FL<br>863-673-6751 | 4<br>Every Tues &<br>Thurs Mounted<br>Drill Team—<br>Lee Co Posse<br>Arena<br>239-454-4395 | 5<br>Lee Co Posse<br>Jackpot<br>239-543-8081 | 6                                   |
| 7<br> | 8<br>  | 9<br>Every Tues &<br>Thurs Mounted<br>Drill Team—Lee<br>Co Posse Arena<br>239-454-4395 | 10  | 11   | 12   | 13                                  |
| 14    | 15<br> | 16<br>   | 17  | 18   | 19   | 20<br>Ad and<br>payment<br>deadline |
| 21    | 22     | 23<br>   | 24<br>  | 25   | 26   | 27                                  |
| 28    | 29     | 30   | 31<br>  |  |  |                                     |



# Alfalfa Hay

**\$10.50 per bale!**

**Bonita Area**

**239-633-5238 Angela**

© 2005 Everything Equine

## Kowiachobee Animal Preserve

A Non-Profit Educational Organization

**150 lb bag horse shavings  
\$10 donation**

2861 4th Ave SE  
Naples, FL 34117

Phone 239-352-5387  
Fax 239-352-3510

Delivery Available

[www.KAP-naples.com](http://www.KAP-naples.com)

## FREE CLASSES

*on ALL Horse related subjects.*

*Specializing in relationship training for you & your horse, and horsemanship.*

*Come Meet Our Wonderful HORSES.*

*Inquire about our horse adoption program.*

**SW FL Equine Rescue, Inc.**

**239-348-9150**



2 year old  
golden chestnut  
mare. Very flashy.  
Beautiful mover.



Could go English or  
Western. 60 days in  
training. Bathes,  
clips, ties, UTD  
\$1000 239-353-0624

**Cavallino Farms**  
Naples, FL



Hunter / Jumper training

"A" circuit show horses provided

Boarding & private lessons

Beginner to advanced



Located at the prestigious  
Collier Equestrian Center in Naples,  
Cavallino Farms invites you to improve  
your riding skills and discover the  
excitement of show competition.

Travel to the most beautiful show  
grounds in Florida as a member of the  
Cavallino Hunter / Jumper show team  
or a supportive team spectator.

**239.877.2795**

**[www.cavallinofarms.com](http://www.cavallinofarms.com)**

Collier

Collier

Collier

Collier

Collier

Collier

Collier

INTERNET

**Free Spirit Saddles & Tack****Wholesale Prices to the Public!***New & Used Saddles, Bridles & other Horse Items!***www.FreeSpiritEnt.com**

Merry Nehls

PO Box 834

703 St. Anne

Christmas, FL 32709

**FreeSpiritEnt@bellsouth.net****Phone: 407-592-0697****Fax: 407-568-0697**

**HAVE AN  
INTERNET  
BUSINESS?  
ADVERTISE IT  
HERE!**

Collier

2 year old  
chestnut  
mare.

13 1hh. Will  
make great  
hunter pony.

Competitive,  
good, solid  
temperament,  
60 days in

training, Bathes, clips, ties, UTD \$1000 239-353-0624



You might have owned horses too long if...  
...you quit eavesdropping on a stranger's conversation  
when you realize that the 'three bars' to which they were  
referring, was their cell phone reception.

Melody, Collier County

2 yr, palomino stud, AQHA 15 2+hh & growing!  
ThreeBars, Poco Pine, Leo Pat, Zippo Pat Bars,  
Rugged Lark on papers! Good temperament  
\$2,850



Collier

Collier

Collier

Collier

Independent Distributor

**LIFEWAVE**  
ENERGY ENHANCER

Patricia Brodersen

www.LifeWave.com/PatiBrodersen

Email: Equinemajic@swfla.rr.com

239-825-0964

**Moving - MUST SELL!!!**

16 Month Old Registered Appaloosa Filly, Currently 13h

5 Year Old Paint Cross, Excellent Trail-plus, Gelding

Fleabitten Gray QH Western/English Gelding

6 Year Old Registered Palomino Gelding, 15h

4 Year Old QH Bay Gelding, 14h

**All reasonably priced, starting at**

**\$1,600**

**239-354-2801**

Registered Appaloosa mare  
15.2, 20 yrs old, Ready to  
retire from showing but still  
lots of fun! All white with a  
black spot on nose and  
freckles on her ears. Easy  
keeper. Rides Eng. &  
Western- Looking for trail  
ride/pleasure ride/compan-  
ion horse job. She is kind  
and kid safe. \$750.00. Price  
very negotiable to the right  
home, Call Deborah  
239-269-9574





## HEALING YOUR HORSE HOLISTICALLY

visit me at: [www.TheHorseShaman.com](http://www.TheHorseShaman.com)  
 email: [thehorseshaman@aol.com](mailto:thehorseshaman@aol.com)  
 telephone for an appointment (239) 253-9008

"It is a touching and tender moment when a horse opens to me to reveal its innermost concerns and fears that are the underlying cause of a physical ailment. Once I reach this communion with a horse I can offer proper physical therapy and healing energy that release the negative pattern and instill wholeness."

*Maureen Sanders, The Horse Shaman*



### Collier County Animal League

6017 Pine Ridge Rd., #138  
 Naples, FL 34119-3956

Phone: (239) 450-6301  
 Fax: (707) 598-7680



Sam is a handsome, 9 month old, neutered male Hound mix. He was surrendered by his owners after being hit by a car. He had a fractured pelvis and needed 6 weeks cage rest to recover. CCAL took him and now he has made a full recovery from the fracture. He is house trained, loves dogs, cats and people. He just wants to be with you and give and receive love and affection. He's a real sweetie! Adoption fee is \$50 and includes: Heartworm test, spay, all vaccinations including Rabies, Microchip, plus 30 days free health insurance sponsored by Petfinder.com. To see Sam, call 239-450-6301 or go to [collierrescue.com](http://collierrescue.com).

[www.collierrescue.com](http://www.collierrescue.com)

Email: [info@collierrescue.com](mailto:info@collierrescue.com)

Collier

Collier

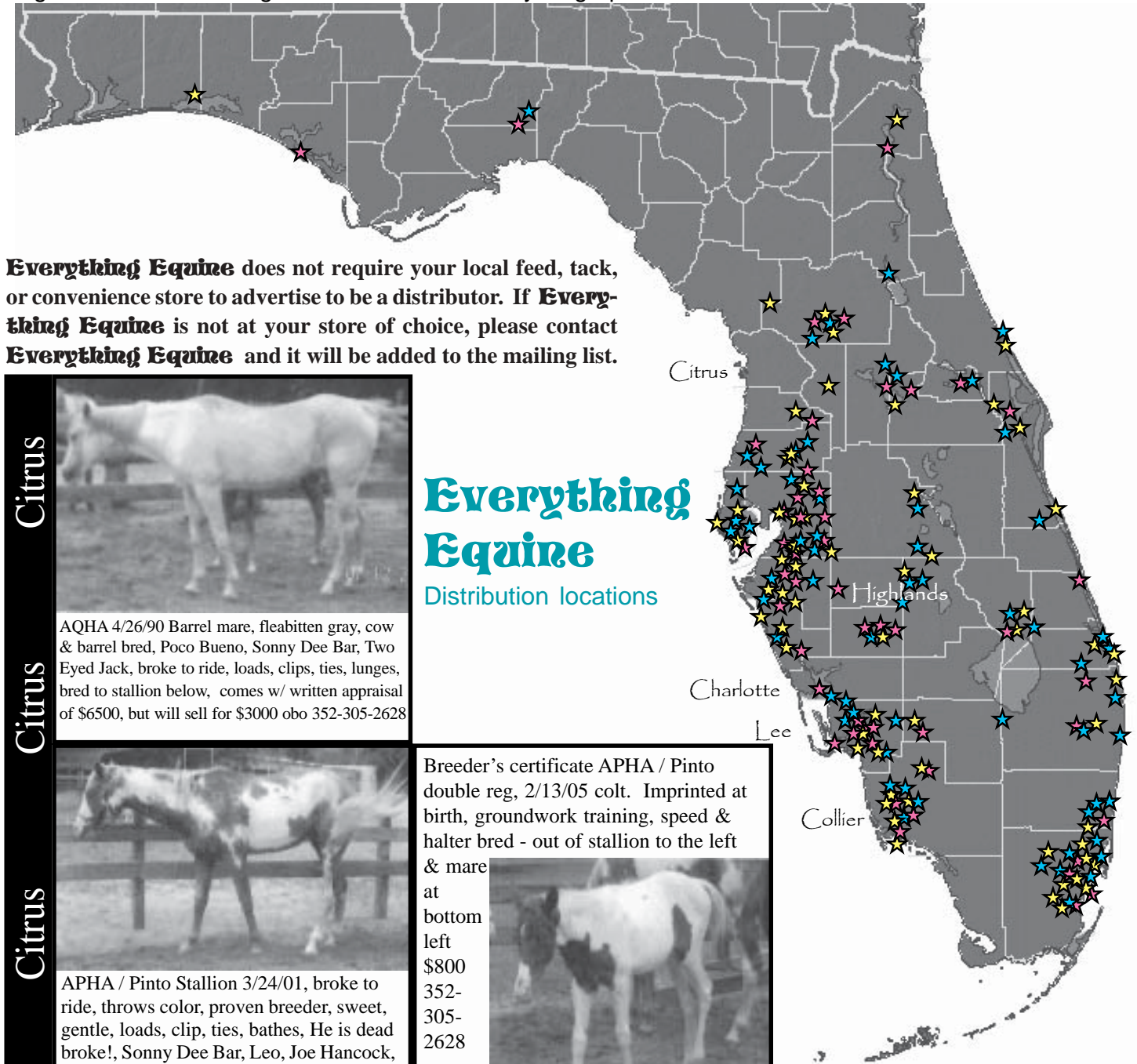
Collier

Collier

Collier

Collier

Collier



Citrus



AQHA 4/26/90 Barrel mare, fleabitten gray, cow & barrel bred, Poco Bueno, Sonny Dee Bar, Two Eyed Jack, broke to ride, loads, clips, ties, lunges, bred to stallion below, comes w/ written appraisal of \$6500, but will sell for \$3000 obo 352-305-2628

## Everything Equine

Distribution locations

Citrus



APHA / Pinto Stallion 3/24/01, broke to ride, throws color, proven breeder, sweet, gentle, loads, clip, ties, bathes, He is dead broke!, Sonny Dee Bar, Leo, Joe Hancock, comes w/ written appraisal of \$6000, but will sell for \$3000 352-305-2628

Breeder's certificate APHA / Pinto double reg, 2/13/05 colt. Imprinted at birth, groundwork training, speed & halter bred - out of stallion to the left & mare at bottom left

\$800  
352-305-2628



Citrus

Citrus



APHA 3/29/97 Black Tob-overo, blue eyes, possibly in foal to above stallion. loads, clips, ties, bathes, lunges, needs finishing, Go Man Go, Moon Deck, Poco Bueno, Jet Deck, Man O War bloodlines - good speed event horse. \$2500 352-305-2628



APHA / Pinto breeder's certificate 2/26/05 Filly, sorrel w/ white blaze & socks, imprinted at birth, ground work training, barrel prospect, Sire & Dam to the left \$800 352-302-2628



AQHA 4/16/03 Chestnut Mare, loads, clips, ties, bathes, lunges, needs breaking for saddle. Cupcake Kahe & All The Aces Bloodlines \$1000 352-305-2628

Citrus



# The sunshine state horse council needs you!

**Give them the information they need to help us as horse owners!**

## Florida Survey of Horse Owners Conducted by: AHOOF - Sunshine State Horse Council

As horse owners in the State of Florida we need to look at the major impact we have in our state. Our numbers need to count along with the economic impact we have. Please take the time to fill this survey out & mail it back to the horse council. Mail to: SSHC PO Box 6663 Brandon, FL 33508-6011

The County you live in: \_\_\_\_\_

Number of horses owned: \_\_\_\_\_

Do you board your horse? Yes      No      How many do you board? \_\_\_\_\_

If you Board how much per month do you pay? \_\_\_\_\_

Own your own property? Yes      No      How much are your property taxes? \_\_\_\_\_ (Estimate)

Breed or breeds of horse? \_\_\_\_\_

What sport do you enjoy with your horse? \_\_\_\_\_

If you use a Farrier how much do you spend each visit? \_\_\_\_\_

Large animal vet care, average per year? \_\_\_\_\_

Cost of your feed per month? \_\_\_\_\_ Hay \_\_\_\_\_ Type of hay you feed? \_\_\_\_\_

Cost of any extra supplements per month? \_\_\_\_\_

When you buy horse related products i.e. saddle pads, brushes, fly spray, how much do you spend?

Estimate on an annual bases? \_\_\_\_\_

If you own a truck what size is it? \_\_\_\_\_ Diesel or gas? \_\_\_\_\_

Do you own a horse trailer? Yes      No

Insurance cost annually? Truck \_\_\_\_\_ Trailer \_\_\_\_\_

License plate cost? Truck \_\_\_\_\_ Trailer \_\_\_\_\_

Name: (optional) \_\_\_\_\_

We are extending the date. Please mail survey back ASAP. You may copy this survey to pass on to anyone who owns a horse in Florida. Thanks, AHOOF-SSHC

## MOUNTAIN HORSES FOR SALE!

CURRENTLY THREE BABIES TO CHOOSE FROM!

'05 Black colt out of DONMAR DUKE (pictured below)

'05 Black Colt out of UNTOUCHABLE

Chocolate Yearling filly out of DONMAR DUKE

ALSO FOR SALE, mare bred to DONMAR DUKE for '06.

Sires can be seen at C&W MOUNTAIN HORSE FARM

or [www.cwmountainhorses.com](http://www.cwmountainhorses.com)

239-825-0964 - Patty Brodersen

[equinemajic@swfla.rr.com](mailto:equinemajic@swfla.rr.com)



This colt is sired by Don-Mar Duke  
Born April 2nd, 2005. Taking deposit of 10% for  
delivery in September. He is at the C&W Mountain  
Horse Farm until time for weaning. Priced at \$3000.00

### PASO FINO HORSES



TOP BLOOD LINES

HORSES FOR SALE

STUD SERVICE

HAY & BULK  
SHAVINGS  
AVAILABLE

CALL FOR DETAILS  
RANDY  
239-225-5890

## CORNER CREEK RANCH

[www.cornercreekranch.com](http://www.cornercreekranch.com)

© 2005 Everything Equine



## Backhoe & Grading Service by Patrick

ponds  
cow wells  
site work

239-872-4092

Patrick May

© 2005 Everything Equine

## \$\$REWARD\$\$

LOST Since 7/14 Small Brown Pug-Like  
Dog with a Limp

**HER NAME IS JASMINE**

SHE IS DEAF AND PARTIALLY BLIND, SO SHE MAY  
NOT COME WHEN CALLED & SHE IS SHY. PLEASE  
HELP US FIND HER. SHE HAS A BLACK COLLAR WITH  
2 TAGS. SHE IS A SHORT HAired, BROWN, BRUSSELS  
GRIFFON WITH A BLACK FACE. SHE WAS LOST FROM  
9<sup>TH</sup> ST. OFF GOLDEN GATE BLVD AND LAST SEEN  
BETWEEN 7<sup>TH</sup> AND 3<sup>RD</sup> STREETS OFF GG BLVD.

CALL 239-455-6765 or 239-398-4828

## Lost? Stolen?

**Everything Equine** is not only a  
sales and advertisement publication, but it  
also is striving to serve the community. If  
you are in the unfortunate situation to  
have lost a dog or cat, or have a horse  
stolen, Everything Equine would like to  
help. Please send a photo and  
information about the lost or stolen  
animal. It will be included free of charge  
on a space permitting basis.

1300+ lb mulched and compacted from Idaho

## Alfalfa Bales

\$190 - one, \$180 - 2, or \$170 - 3 or more

We will load on your truck.

75 lb mulched and compacted bales - \$13

You load yourself!

Please call for appointment to pick up.

**Contact Jo Carns 863-673-6751**

Sweet Cypress Ranch  
210 Kirby Thompson Road  
Alva, Florida

Good horses for sale at all times.



© 2005 Everything Equine



# LOOK AT THESE BABIES!

## SPIDER MY MAN



APHA breeding stock colt,  
3/4 TB, Out of  
MEANDMYLOVEMAN and  
Twinkle In My Eye  
(Best of Colors & Heza Doger),  
Bay, Taking deposits \$1,500 obo



## ROCK A VERSA

APHA Roan  
Paint Filly,  
Halter or all  
around prospect -  
*show season is just  
around the corner!* Out of Hancock  
Stallion, Smooth as Rocks & RCR  
What A Versa. \$3,500  
Taking deposits 239- 543-2153

Native  
Wynd  
Farms

239-  
543-2153



Home of

# MEANDMYLOVEMAN



Humans can hop on a scale to check their weight. It is not so easy with a horse! Luckily there are visual clues to your horse's weight. Use the chart to the right to see if your horse is at a healthy weight.

If your body score is higher than you would like, try some equi-cise to drop a few pounds!



# Equi-cise



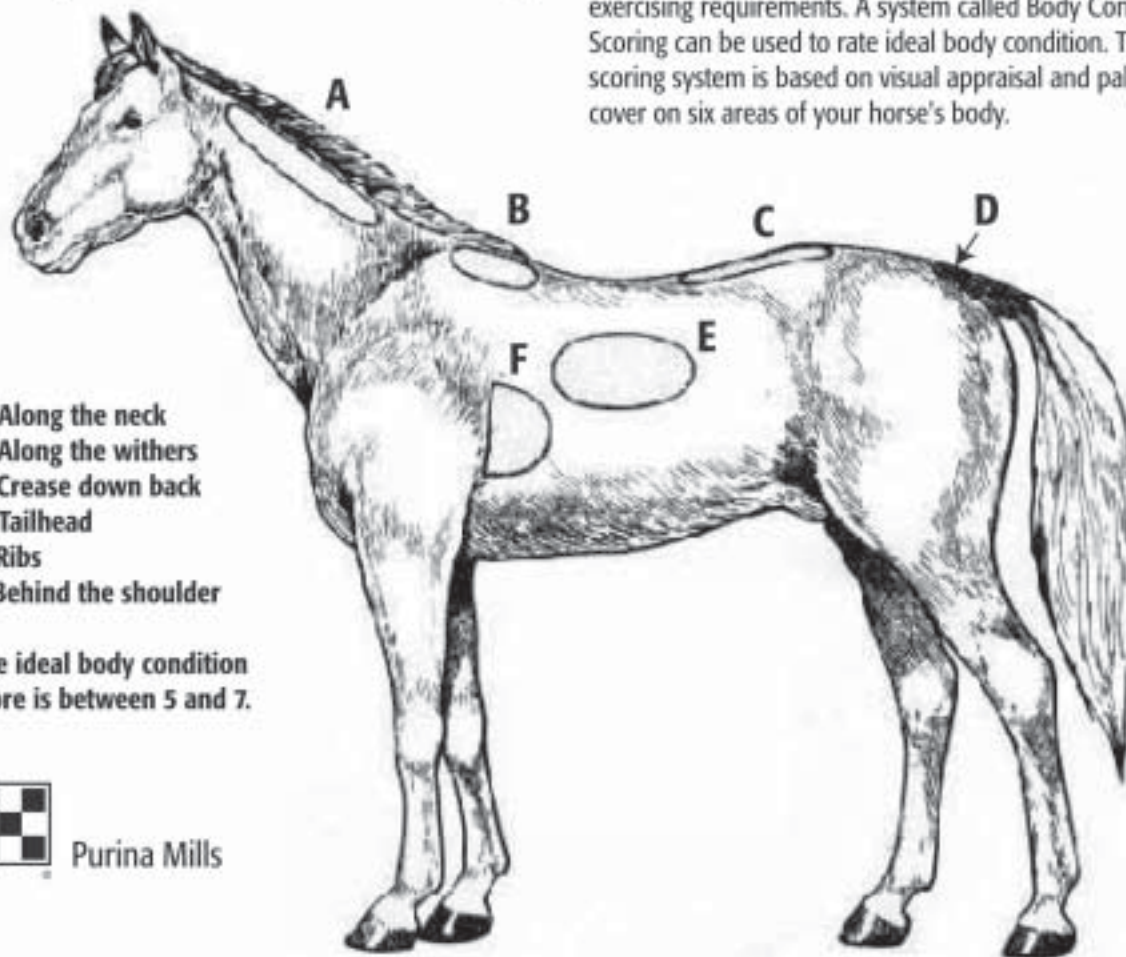
## Calories burned per hour:

| ACTIVITY:  | For 130 lb person | For 155 lb person | For 190 lb person |
|--|-------------------|-------------------|-------------------|
| Riding horse at a gallop:  | 472 cal/hr        | 563 cal/hr        | 690 cal/hr        |
| Baling hay/cleaning barn   | 472 cal/hr        | 563 cal/hr        | 690 cal/hr        |
| Polo   | 472 cal/hr        | 563 cal/hr        | 690 cal/hr        |
| Riding horse at the trot:  | 384 cal/hr        | 457 cal/hr        | 561 cal/hr        |
| Shoveling  | 354 cal/hr        | 422 cal/hr        | 518 cal/hr        |
| Horse Grooming   | 354 cal/hr        | 422 cal/hr        | 518 cal/hr        |
| Fencing  | 354 cal/hr        | 422 cal/hr        | 518 cal/hr        |
| Hiking, cross country <small>(if your horse is hard to catch...)</small> | 354 cal/hr        | 422 cal/hr        | 518 cal/hr        |
| Shoveling Grain  | 325 cal/hr        | 387 cal/hr        | 474 cal/hr        |
| General Horse Riding:  | 236 cal/hr        | 281 cal/hr        | 345 cal/hr        |
| Riding horse at the walk:  | 148 cal/hr        | 176 cal/hr        | 216 cal/hr        |
| <i>Compare to non-horse related exercises!</i>                           |                   |                   |                   |
| Brisk walking 4 MPH  | 236 cal/hr        | 281 cal/hr        | 345 cal/hr        |
| Walking, carrying 15 lb load   | 207 cal/hr        | 246 cal/hr        | 302 cal/hr        |



# Body Condition Scoring

Many physiological functions in horses are influenced by body condition, including a horse's maintenance, reproductive and exercising requirements. A system called Body Condition Scoring can be used to rate ideal body condition. This condition scoring system is based on visual appraisal and palpable fat cover on six areas of your horse's body.



- A. Along the neck
- B. Along the withers
- C. Crease down back
- D. Tailhead
- E. Ribs
- F. Behind the shoulder

The ideal body condition score is between 5 and 7.



Purina Mills

## Description of Individual Condition Scores (Score 1-9)

- 1. Poor:** Animal extremely emaciated; spinous processes, ribs, tailhead, tuber coxae (hip joints), and ischia (lower pelvic bones) projecting prominently; bone structure of withers, shoulders and neck easily noticeable; no fatty tissue can be felt.
- 2. Very Thin:** Animal emaciated; slight fat covering over base of spinous processes; transverse processes of lumbar vertebrae feel rounded; spinous processes, ribs, tailhead, tuber coxae (hip joints) and ischia (lower pelvic bones) prominent; withers, shoulders and neck structure faintly discernible.
- 3. Thin:** Fat buildup about halfway on spinous processes; transverse processes cannot be felt; slight fat cover over ribs; spinous processes and ribs easily discernible; tailhead prominent, but individual vertebrae cannot be identified visually; tuber coxae (hip joints) appear rounded but easily discernible; tuber ischia (lower pelvic bones) not distinguishable; withers, shoulders and neck accentuated.
- 4. Moderately Thin:** Slight ridge along back; faint outline of ribs discernible; tailhead prominence depends on conformation, fat can be felt around it; tuber coxae (hips joints) not discernible; withers, shoulders and neck not obviously thin.
- 5. Moderate:** Back is flat (no crease or ridge); ribs not visually distinguishable but easily felt; fat around tailhead beginning to feel spongy; withers appear rounded over spinous processes; shoulders and neck blend smoothly into body.
- 6. Moderately Fleishy:** May have slight crease down back; fat over ribs spongy; fat around tailhead soft; fat beginning to be deposited along the side of withers, behind shoulders, and along sides of neck.
- 7. Fleishy:** May have crease down back; individual ribs can be felt, but noticeable filling between ribs with fat; fat around tailhead soft; fat deposited along withers, behind shoulders, and along neck.
- 8. Fat:** Crease down back; difficult to feel ribs; fat around tailhead very soft; area along withers filled with fat; area behind shoulder filled with fat; noticeable thickening of neck; fat deposited along inner thighs.
- 9. Extremely Fat:** Obvious crease down back; patchy fat appearing over ribs; bulging fat around tailhead, along withers, behind shoulders, and along neck; fat along inner thighs may rub together; flank filled with fat.

Lee

Lee

Lee

Lee

Lee

Lee

Lee

Thanks to all who submitted 'You might have owned horses too long if...'  
Keep them original and keep them coming!

~~~~~  
**You might have owned horses too long if...**

.... you bring out your brag book and it has pictures of your horses and not your kids.

..... the most important items on your grocery list are apples and carrots.

..... you manage your time according to your horses' feeding schedule.

.... your barn is cleaner than your house.

**Marcia, Lee County**

...you refer to your own anatomy as if it were a horse's, i.e., OUCH! I just banged my cannon bone!

**Vicky, Lee County**



Walsh Freightliner and  
Western Star dba  
**Sundowner  
of Florida**

**Announcing  
TWO locations**  
**Ft Myers - Lee Civic Center**  
**Tampa - State Fairgrounds**



*Over 4 million dollars of inventory IN STOCK  
including Freightliner Sports Chassis'*

See our inventory at **www.horsetrailerinc.com**

**Jo Carns**

*Independent Sales Agent*

Call Jo for an appointment or  
stop by and see her in Ft Myers.

863-673-6751 Cell  
863-675-5995 Home  
jocarns@wflaws.com



Tobiano Clydesdale mare. Ride her, drive her or breed her. Throws wonderful TB crosses. Super sweet, and safe for anyone to ride. Easy to handle and not destructive. To good home only. Asking \$4000 call 239-633-9574



Beautiful 5 yr old bay TB Gelding. 16 2hh. Walk, trot, canter, auto lead change, started over cross rails, good mover, loves attention. Just needs more mileage. Will excel in Hunter or Dressage. 100% sound. Asking \$6,500 neg to good home. call 239-633-9574



Awesome all around prospect, 3 yr red dunn gelding. 14 3hh, will mature to 15 2hh. Walks, trots, canters, trail rides, super safe, loves attention, great 4-H or child's horse. 100% sound. To good home only. Asking \$4,500 call 239-633-9574



**2000 Trailer - Sooner Rio**

**Aluminum - \$13,000**

**239-458-7560**



# DJ'S Ranch Boarding Stable

Under new ownership and doing great! [djsboarding@hotmail.com](mailto:djsboarding@hotmail.com)

**17840 Shelby Lane**

**N. Ft. Myers, FL 33917**

Full care board \$275  
Grain & hay twice a day

Bran twice a week & worming every 8 weeks included in full board  
32 stalls, Round pen, Full size lighted arena and lots of trails to ride on.

Access to 2700 acre county horse riding park

Our boarders love to trail ride so come board with us and hit the trails!

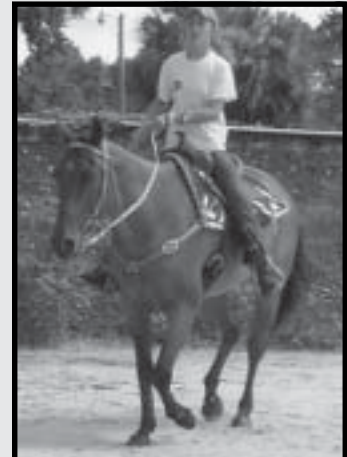
***Horses for sale at all times. Come see what we have.***



10 year old Leopard Appaloosa Gelding, 15 hh. Safe for kids of all ages. Very kind horse. \$1,500



10 year old Morgan gelding. This horse is Beautiful! Rides with spirit, Needs an experienced rider Teen or Adult \$2000



8 year old Reg Red Roan QH Gelding. Bloodlines include - Doc Bar, Three Bars, Poco Tivio, Poco Bueno, King and Pago Solano. Rides nice. Being ridden by 11 y.o. girl. Nice trot & lope. Super quiet. \$3500



5 y.o. Red Roan Paint Gelding. Was someone's pasture ornament, now saddle broke and walking nice. Needs to be finished. Has a great personality but still needs a quiet hand. Will make a great game or trail horse w/ the correct training. \$2250



4 y.o. Reg QH Mare. Three bars on top & bottom side. Exceptionally quiet horse. Kids ride her bareback. She will make a great kids or small adult trail horse. Needs to be finished in training. \$1800



6 y.o. Reg BS paint mare. Riding good, needs further training. Will make a great English or Western Pleasure show mare. If you are looking for a show horse, do not let this one get by. Super quiet. Bathes, clips, loads, stands for farrier, \$2500

**239-543-4050 or 239-340-3667**



# 239-482-8822

## Over 75 Trucks to Choose From!

**IF WE DON'T HAVE IT,  
WE WILL GET IT!**

**Since 1971 ~ A 33 year history of selling quality, clean TRUCKS!**



Warranties  
Available

2003 Ford Expedition, Eddie Bauer edition, 3rd row seat, all options, low miles! Call Greg 239-482-8822



2003 Dodge 2500 Crew Cab, 4x4, Diesel, One owner, Low miles! Call Greg 239-482-8822



Bank  
Financing

2003 Ford F-350 Lariat, Crewcab, 4x4, Diesel, Leather! Call Greg 239-482-8822



Bank  
Financing

2005 GMC 2500 4x4, Duramax diesel, Crew cab, 8000 miles! Call Greg 239-482-8822

2003 GMC 1500HD, 4x4, Crew cab!  
2003 F150 Supercrew, 4x4, Lariat!  
2001 F-250 Crew Cab, 4x4, Diesel, 2 to chose from!  
2004 Chevrolet 3500 Cab and Chassie, Low miles!  
2002 Toyota Tacoma DBL cab, Off road Pre-runner package, automatic!  
2001 Dodge Ram 1500 4X4 V8, Automatic, Low, low miles!

**Inventory changes daily!  
Call for new listings!**



Warranties  
Available

2003 Chevy Suburban, 4x4, Loaded, 3rd row seat, leather! Call Greg 239-482-8822

**We can get you in a truck that fits your hauling needs!**

**11230 Palm Beach Blvd., Ft. Myers - Exit 141 East 2 Miles, Next to Maine's Best Seafood**

© 2005 Everything Equine



13yr. gelding quarter horse, bomb proof, trained in barrels, trail, rode with sheriff

posse, great smooth trail riding, no vices. Rideable, kids from 8 to 80! \$1,500 239-693-6894 leave message



Standardbred Mare 15 2h, loves to trail with others, jumps 2.5ft and pulls cart. Great for novice or anyone wanting a low maintenance horse. UTD on shots and coggins. \$1500 obo days-239-574-1073 eve.-239-940-0810

**HIGH QUALITY  
T & A HAY FOR  
SALE**

**\$9.50/BALE**

**239-543-2153**

**NATIVE WYND FARM**



9 yr old Reg Sorrel Mare "Beat Cass Holme" aka Cassie. Trail horse or Brood Mare. Excellent bloodlines. \$3500 or take trade 239-543-5879



Barrel Horse, 13 yr old Palomino Mare. Currently runs 2D-3D times in NBHA.

Easy Keeper. Any one can ride! \$5,500, 239-543-5879 or 239-229-9939 Serious inquiry only!

You might have owned horses too long if...  
...you have to run to the barn to grab vegetable oil for the eggplant that you are about to fry!

Danielle, Lee County





AQHA weanling colt sorrel w/ blaze, easy to handle - sire Jazzy Bargain, dam Poco Misty Stars, \$1200 obo 863-843-0388



Yearling Filly ApHC, very gentle, sorrel w/ white blanket, lots of color, sire: Private Collection Dam: Tardee Bars, unlimited potential, shown in halter \$3500 863-843-0388



Yearling Thoroughbred colt, JC, dark bay, sire: The Silver Move dam: Spark Trek, will be over 16h \$2500 863-843-0388



4 y.o. AQHA bay mare by World Champion & 2 time Congress winner Doc O Mos and out of a granddaughter of Mr. Diamond Dude. \$3,500 863-453-4429



Big beautiful 16 hand APHA gelding. 6 y.o. He would make a great All Around or Hunter prospect. No vices. \$2,500 863-453-4429



### FIREHOUSE STABLES Horse Boarding

19471 Little Lane  
Alva, Florida 33920  
(239) 872-5871  
firehousestables@earthlink.net  
Carl & Mari Temple

## Alfalfa T & A Timothy

Hay Hay Hay Hay Hay Hay Hay

Delivered by the semi-load or free delivery of 50 bales or more to Ft Myers area!



239-470-3113

© 2005 Everything Equine

## HORSE BOARDING

Private six stall, tall, shaded barn. 12 x 12 stalls with fans in each stall, cleaned twice a day. Daily turnout in green pastures.

Experienced owners on premises 24/7, locked gate. Full board only includes T&A and grain twice daily, bran twice a week, salt blocks in each stall, (carrots daily). Conveniently located in North Fort Myers, not far from Fort Myers and Cape Coral on border of 2000 acre conservation area with 30 miles of trails to ride. Nature at its finest. Refrigerator, picnic table, and facilities available.

Responsible, nice people welcome!

ENDLESS TRAILS 239-731-3265



12x12 Stalls ~ Round Pen ~ Arena ~ High Ground ~ Trail Riding

### Dream Catcher Stables

Horse Boarding  
Mike and Marcia Dennis  
Owner on Premises



23261 Tuckahoe Road ~ Alva, FL 33920  
(239) 693-9845 ~ DreamCatcherStable@aol.com

Highlands

Highlands

Highlands

Lee

Lee

Lee



# Horse Tales

Sponsored by

Quality  
Tree Service

Quality Tree Service

"Where Quality Is What  
You Get".

Phone 863-673-5440

James May,  
General Manager

Horse tales is an area where original, unpublished works by local writers and artists will be featured. If you have a short story, poem, work of art or anything that you've created and are interested in seeing in print, contact James May for submission guidelines, or if you would like to sponsor this feature, please call 239-731-2993, or email [jmay0731@aol.com](mailto:jmay0731@aol.com). This feature is *sponsored in full by local businesses* within our community. We are introducing an opportunity for children and adults alike to show their creative abilities and talents to the entire community. Please limit your submissions to horse related tales that coincide with an equestrian - oriented way of life.

True Definitions

Galloping. Such a simple word to take a great meaning in its stride. The dictionary defines galloping as the fastest pace of a horse in which all four feet are off the ground in each stride. It does not tell of the feeling of wind rushing past or dirt kicked up around us. The dictionary fails at describing the racing of my heart, its constant pounding in beat with my horse's heavy breathing, keeping time with our running flying race across the land. The wind soars to meet me, tossing my hair above my head. Rhythmically I feel the ground as we meet it too. Up again, air gushing past in those sparse seconds of flying. I lean further forward into the rhythm. We are both running and flying, the wind and earth passing through us, under us, by us. No definition of mere words can ever compare, for it is these things that a gallop truly is; this excitement and energy that surrounds us both, pushing us onward to the world and all it holds waiting. So on, the two of us race, rising and falling as one creature, one being, held gripped by our own exuberance of life.

By

Katie Flenner, age 16

Barron Collier High School, Collier County



# How Horses Changed My Life

By: Breanne Hurst, Age: 15  
Homeschooled, Collier County



I remember the first horse that was “officially” mine. His name was Turtle. He taught me how to ride and he was always there for me when I was down. When I was about five years old we got Turtle from some guy who couldn’t get him to do anything. Well my Dad bought him for roping and won a lot of belt buckles on him. I rode him on trail rides and to help my Dad round-up cattle for when he roped. This horse was basically my baby-sitter. I mean we were together all the time. Those are the best memories a girl can have is with her horse. He was the first horse I ever had a relationship with. I remember one time when Turtle and I were by ourselves waiting for my Dad and his friend to bring in the cattle. It was me and Turtle in this huge pasture alone. It was getting dark, I was getting scared, and my Dad wasn’t there yet. I said to Turtle, “When do

you think they’re coming back?” After I said that, I felt this warm feeling of comfort, and I knew it was him. After that I saw my dad riding up with the cows. That’s what type of unconditional love you get from horses. These creatures are so sensitive and thoughtful it’s hard to image how people can not even have an interest in them. They really tell you a lot if you just listen to them. If I didn’t have a horse of my own I would probably end up in trouble somewhere and be doing drugs and other horrible, self-destructive things. In our society, people are always looking for a way to feel good, and I walk around and see all of these delinquents and people with really low self-esteem and it makes me glad that I have a horse at home to run to. I know a lot of people that have trouble staying away from drugs and the law and It hurts me because there is absolutely no way I can convince them that just its wrong your just hurting yourself. Sometimes they do those things to make them feel loved and good. I’m just thinking, it’s too bad they don’t realize that is the feeling that you get when you are with horses! I’m just so happy that I am involved with horses and people that have horses. That’s where horses come in. When you own a horse you won’t have time to do destructive things because you’re too busy loving your horse. My horse Squirrel, is now my best friend. My life is him.

Now do you see how these magnificent animals change people’s lives? Horses seriously make a difference. Horses have changed my life for sure. I hope they will change yours.



Current advertisers may be listed in the resource directory for an additional \$5 per insertion.  
Businesses that do not have current display ads in Everything Equine may be listed in the  
Resource Directory for \$20 per insertion.

# Resource Directory

## Breeding

Native Wynd Farms 239-543-2153  
Ft Myers

## Feed & Tack

Dynamite Nutrition, Patricia Broadersen  
239-825-0964 Naples, FL

Golden Gate Nursery, 239-455-7233  
14765 Collier Blvd. Naples, FL 34119

## Horse Sales

Tall Pines Farm 239-353-0265  
Naples, FL (miniatures)

## 1/2 off to riding instructors/trainers for September!

I had a phone call the other day asking if I knew of a barrel racing trainer in Lee County. I know **of** a lot of barrel racers, but I do not know **if** they teach. There must be a barrel racing trainer in Lee County! If you are a riding instructor of any kind, from any county, place an insertion in the Resource Directory for September and get 1/2 off! \$10 will get your name, number and county listed under your respective discipline. Get your name in circulation for the 2005-2006 show season! Thanks, Melody

## WANTED!

Businesses to be listed in the Resource Directory.  
Do not pass up this opportunity to  
get your name out there!

The Resource Directory is divided up by service provided and is the most affordable way to advertise your business in **Everything Equine**.

## Need a photo session?

Would you like to place a photo ad,  
but do not have a photo?

We can come to you! For \$15 we will come to you and spend up to one hour getting the best photo possible. We can stay longer if necessary for \$10 for each additional 1/2 hour.

If you need photos to promote your business call us to schedule an appointment. The same rates apply.

Lee, Hendry and Charlotte County residents call Sherri at 239-229-8533.

Collier residents, call Melody at 239-403-3784.



# Business Ad Rates

|                                  | <b>B/W</b>      | <b>Accent Color</b> | <b>Full Color</b> |
|----------------------------------|-----------------|---------------------|-------------------|
| <b>Front Cover</b>               | <b>n/a</b>      | <b>n/a</b>          | <b>\$335.00</b>   |
| <b>Inside Cover</b>              | <b>\$225.00</b> | <b>\$255.00</b>     | <b>\$305.00</b>   |
| <b>Back Cover</b>                | <b>n/a</b>      | <b>n/a</b>          | <b>\$315.00</b>   |
| <b>Centerfold</b>                | <b>n/a</b>      | <b>n/a</b>          | <b>\$475.00</b>   |
| <b>Full page</b>                 | <b>\$200.00</b> | <b>\$230.00</b>     | <b>\$280.00</b>   |
| <b>1/2 page</b>                  | <b>\$125.00</b> | <b>\$140.00</b>     | <b>\$165.00</b>   |
| <b>1/4 page</b>                  | <b>\$85.00</b>  | <b>\$95.00</b>      | <b>\$115.00</b>   |
| <b>1/6 page</b>                  | <b>\$70.00</b>  | <b>\$80.00</b>      | <b>\$95.00</b>    |
| <b>1/8 page</b>                  | <b>\$50.00</b>  | <b>\$55.00</b>      | <b>\$65.00</b>    |
| <b>1/10 page (Business card)</b> | <b>\$35.00</b>  | <b>\$40.00</b>      | <b>\$45.00</b>    |

Save 10% by prepaying for three months.

Business ads are for anyone wishing to advertise a farm, business or stud services.

Business Name: \_\_\_\_\_ Owner: \_\_\_\_\_

Address: \_\_\_\_\_ City: \_\_\_\_\_ St: \_\_\_\_\_ Zip: \_\_\_\_\_

Phone #: ( \_\_\_\_\_ ) \_\_\_\_\_ - \_\_\_\_\_ Email: \_\_\_\_\_

County: \_\_\_\_\_

Credit Card #: \_\_\_\_\_ Expiration Date: \_\_\_\_\_ \$: \_\_\_\_\_

Ad deadline is the 20th of each month. Mail payment, photo and ad information to:

Everything Equine

460 6th St NE

Naples, FL 34120

or

email digital ad to everythingequine@swfla.rr.com. If you email your ad, PLEASE do not include payment information. We will call you for your credit card information. If you need an ad designed, please let us know. We can assist in that matter.

Office: 239-403-EQUI (3784)

Fax: 239-353-5167

Email: everythingequine@swfla.rr.com





# THE HOOF SUPPLEMENT WITH A KICK!



## Total Mobility EQ™

The strongest, highest quality premium hoof supplement on the market, scientifically formulated to promote strong, healthy hooves. It also contains Glucosamine Sulphate 2KCL, an effective ingredient to help your horse's joints. Its wide range of proven ingredients, several of which contribute sulphur, feed the many complex tissues required for your horse's "total mobility". The doctors at MD's Choice have created a product with highly effective levels of the specific nutrients that are the most important and necessary for maintenance of both hoof and joint health, at the lowest daily cost possible, and in a convenient, premixed pelleted form that is easy to use, easy to dose, and easy to justify to the average horse owner's pocketbook.

## Why Spend Your Money on a Product that Gives You Less? Compare Total Mobility EQ™ to Some of the Other Hoof Supplements

| Product                  | Form   | Biotin  | Lysine   | Methionine | Manganese | Vitamin A | Vitamin D3 | Vitamin E | Zinc/<br>Copper | Glucosamine Sulphate<br>or HCl (see note below) |
|--------------------------|--------|---------|----------|------------|-----------|-----------|------------|-----------|-----------------|-------------------------------------------------|
| Total Mobility EQ™       | Pellet | 25 mg   | 2,500 mg | 3,200 mg   | 30 mg**   | 12,000 IU | 4,700 IU   | 200 IU    | Yes/Yes         | 5,100 mg Glucosamine Sulphate***                |
| Biotin Gold™             | Powder | 20 mg   | 1,000 mg | 2,000 mg   |           |           |            |           | Yes/No          |                                                 |
| Biotin Plus              | Powder | 50 mg   |          | 25 mg      |           |           |            |           | No/No           |                                                 |
| Farrier's Formula®       | Pellet | 5.3 mg  | 1,081 mg | 6,195 mg*  |           |           |            |           | Yes/Yes         |                                                 |
| Focus HF                 | Pellet | 6 mg    |          | 3,147 mg   |           |           |            |           | Yes/Yes         |                                                 |
| Grand Hoof™              | Powder | 20 mg   | 1,500 mg | 3,000 mg   |           |           |            |           | Yes/Yes         |                                                 |
| H.B. 15™                 | Pellet | 20 mg   | 125 mg   | 75 mg      |           |           |            |           | No/No           |                                                 |
| HooFlex+™ (Hoof+)        | Pellet | 15 mg   | 2,575 mg | 3,000 mg   | 200 mg    | 649 IU    |            | 250 IU    | Yes/Yes         |                                                 |
| Horseshoer's Secret®     | Pellet | 7.5 mg  | 93.5 mg  | 1,445 mg   |           |           |            |           | Yes/Yes         |                                                 |
| Joint Combo® Hoof & Coat | Pellet | 16 mg   | 124.5 mg | 73.5 mg    | 16 mg     |           |            |           | Yes/No          | 1,800 mg Glucosamine HCl***                     |
| Master's Hoof Blend™     | Powder | 20 mg   | 1,500 mg | 1,800 mg   | 50 mg     |           |            |           | Yes/Yes         |                                                 |
| Nu-Foot™ Pellets         | Pellet | 15 mg   |          | 1,200 mg   |           | 35,000 IU | 3,750 IU   | 300 IU    | Yes/Yes         |                                                 |
| Nu Hoof Maximizer™       | Powder | 30 mg   | 2,000 mg | 1,800 mg   |           |           |            |           | Yes/Yes         |                                                 |
| Right Balance™           | Pellet | 5 mg    |          |            |           |           |            | 200 IU    | Yes/No          |                                                 |
| Shoer's Friend           | Pellet | 6.25 mg | 1,134 mg | 7,142 mg*  | 170 mg    |           |            |           | Yes/Yes         |                                                 |

\*7,000 mg or more of Methionine (in a 1,000 lb. horse) can block or inhibit the body's ability to use copper if given at that dosage for more than 30 days.

\*\*Manganese (Amino Acid Chelate), the most bioavailable form of Manganese. Check if your hoof supplement is using this form.

\*\*\*Glucosamine HCl has been proven to be less bioavailable than Glucosamine Sulphate 2KCL, with significantly lower absorption. See Web site for more info.

For individual consultation and  
to find a dealer in your area, call  
**1-800-575-1406**



For more information on  
this product, visit  
**www.TotalMobilityEQ.com**

All products mentioned in this ad are the property of their respective owners. All rights reserved. The information on our competitors' products was gathered via the Internet.



# **Tall Pines Miniature Horse Farm**

**Naples, FL 239-353-2065**

*Over 25 Miniature Horses To Choose From!*

Choose from many quality miniature horses! All of our minis are easy to handle and have great behavior skills! They are all registered and come complete with Coggins and Health Certificates. Select from many colors, sizes and ages! Our minis are handled everyday making them extremely calm & gentle! Come see for yourself! Choose from the many stallions, colts & fillies we have on our ranch! Delivery can be arranged anywhere in Florida for a minimal fee.

**Discounts do apply on multiple horse purchases!**



**Looking for that "Hard To Find" Mini Tack for your  
miniature Horse? Then look no further!!!**



We have a complete line of Saddles, Easy Entry Carts, Halters, Harnesses, Mini Horse Blankets, Bridles, Bits, Saddle Pads & Saddle Blankets. We offer Lessons for Harnessing and Driving your mini as a Single or a Team! Come join the Fun at Tall Pines Farms!!!

**[http:// www.tallpinesfarms.com](http://www.tallpinesfarms.com)**

**We will hold your mini horse purchase with only 20% down.**

**We accept Visa, Mastercard & Amex**

**Call us @ (239) 353-2065 cell: (305)923-0754 or e-mail us NOW!!  
e-mail address: [joeyv@tallpinesfarms.com](mailto:joeyv@tallpinesfarms.com)**